

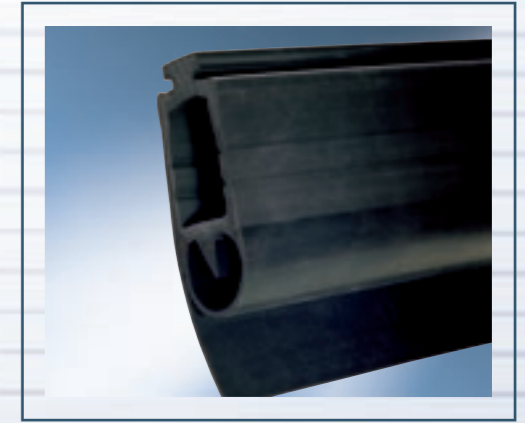
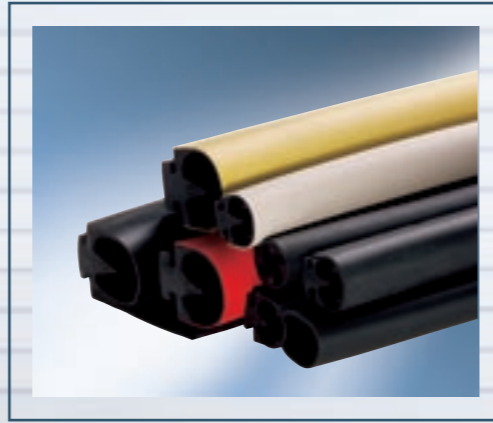
## PROFILES

### / Profile overview

#### / Contact-Duo-Profiles

#### / Quadro-Profiles

#### / Rubber-Sheath-Profiles



### / Contact-Duo-Profiles – for dependable contacting

The Gelbau Contact-Duo-Profiles are ultra-flexible, one-piece rubber profiles made of EPDM or NBR, ideally matched to the closing edge of the gate or machine involved. The maximum actuating force lies well below the 150 N stipulated in the standard. In conjunction with the accessories offered and plug connection technology, the system can be easily and reliably assembled.



The maximum switching strip length is 100 m. Besides the use of prefabricated corner connectors with specified angles (90°, 120°, 135° and 150°) for the profiles 3100.0110I and 3100.0110N, all profile types can also be assembled with divergent angular dimensions requested by the customer. The switching strip can thus be optimally adapted to suit the contour of the closing edge concerned, enabling one-piece corner-switching solutions to be created. Plane offset and circular installation for a radius of at least 300 mm are possible.

A broad range of profiles is available for the various applications and requirements involved. All of them feature ultra-flexible, one-piece construction. Profile types with a compensation chamber guarantee the required compensation travel, depending on the overall height involved. The optional sealing lip compensates for any unevenness in the floor, and provides reliable sealing for the door. Two different profile feet (standard and Braselmann foot) ensure firm, secure attachment to standard mounting rails.

The rubber mixtures used, featuring EPDM and NBR, guarantee high functional reliability even under adverse conditions like moisture and dirt, as well as cold and heat. Thanks to their permanently resilient properties, they offer a high degree of protection against mechanical damage. Their good resistance to ageing guarantees these characteristics even over a lengthy period of time. NBR is, moreover, highly resistant to oils and lubricants.

The system components available for Gelbau Contact-Duo-Profiles are, in addition to other optional accessories: evaluator, plug connector with connecting cable, terminating plug connector with resistor, and end cap.

### / Quadro-Profiles – all good things come in fours

The Gelbau Quadro-Profile is used primarily in the field of local public transport, where it is installed as a safety feature for the closing edges of passenger doors in buses and trains. The EPDM profile can be used only in conjunction with a sealing profile. It is simply pushed into the hollow chamber of existing or newly developed sealing profiles. The profiles have a diameter of 18 mm or 22 mm, and require a sheath-profile with a hollow compartment minimum diameter of 21.5 mm or 25.5 mm. The profile is characterised by a high level of sensitivity.



The Gelbau Quadro-Profile has an action range of 360°, and is fully insulated on the outside. When the conductive zones are touched due to mechanical pressure, this results in electrical contacting. At least three out of the four electrically conductive zones will always touch each other when subjected to mechanical pressure, thus ensuring reliable contacting. The evaluation electronics here open the potential-isolated safety contact, which triggers opening of the door. The high contact pressure achieved thanks to a small contact area assures self-cleaning of the contact surface.

The system components available for the Gelbau Quadro-Profile are: evaluator, plug connector with connecting cable, terminating plug connector with resistor, flexible wire jumper, and end cap. Using these components guarantees a switching sensitivity down to the very last millimetre.

### / Rubber-Sheath-Profiles – vertical protection

Doors with vertical closing edges, e. g. folding doors, have a crossbeam width of approx. 50 mm and a gap width requiring to be safeguarded of at least 120 mm. The closing edge safety feature is required to cover the entire crossbeam width and to close and seal the gap without triggering the switching strip. At the same time, it is required to possess high lateral sensitivity, so that a possible pinch is detected as soon as the door wings are turned. The rubber-sheath-profile developed specifically for this application, with the associated aluminium special rail and the Contact-Duo-Profile 3100.1610, meets these requirements.



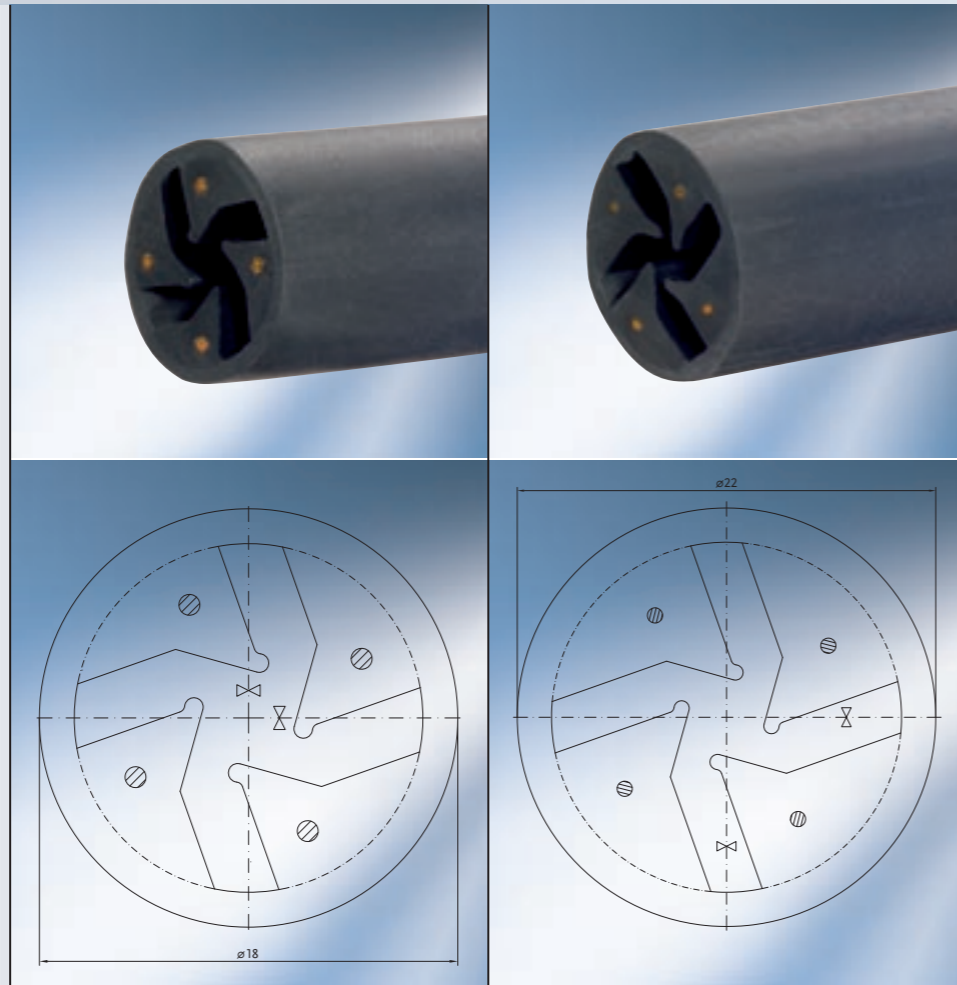
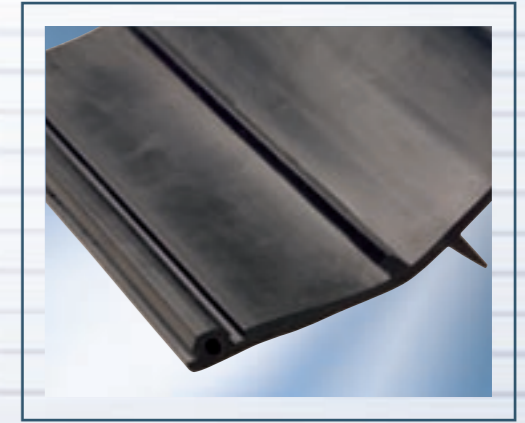
## QUADRO-PROFILE

### / Quadro-Profile overview



## RUBBER-SHEATH-PROFILE

### / Rubber-Sheath-Profile overview



#### Profile overview

Type	060.00	080.00
Article no.	3100.6000	3100.8000
Colour	Black	Black
Material	EPDM	EPDM
Profile foot		
Switching head, insulated	Yes	Yes
Sealing lip	No	No
Connection types	AAS	AAS
Delivery length	Max. 2.5 m	Max. 2.5 m
Min. diameter, sheath profile	21.5 mm	25.5 mm

For dimensions without tolerance particulars, tolerance-free dimensions as per DIN ISO 3302-1 E2 shall apply.



#### Profile overview

Type	01.111
Article no.	3100.1111
Colour	Black
Material	EPDM
Profile foot	Suitable for aluminium special rail 3045.2151
Delivery length	30 m

## Funkcja

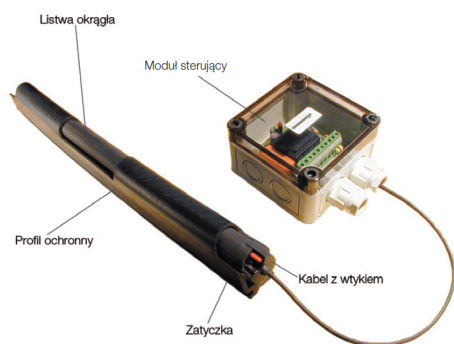
Listwy okrągłe Gelbau są również rozwiązaniem do drzwi autobusów, pociągów i metra. Jest to bardzo opłacalne i efektywne rozwiązanie. Profil charakteryzuje się wysokim poziomem czułości. Listwy działają w temperaturze  $-40^{\circ}\text{C} \dots +80^{\circ}\text{C}$ . Mogą być również użyte w podnoszonych drzwiach i w drzwiach rozsuwanych, gdzie idealnie nadają się do zastąpienia systemów pneumatycznych. Profile są dostępne w dwóch różnych średnicach: 18mm i 22mm.

### Przykładowe aplikacje

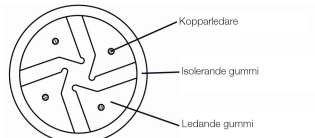
- Drzwi autobusów, pociągów, metra
- Podnoszone i rozsuwane drzwi

### Zalety

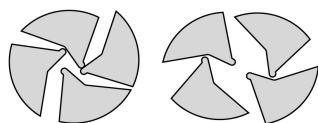
- Zakres działania  $360^{\circ}$
- Łatwe i szybkie do zainstalowania nawet już w istniejących profilach
- Bardzo proste w użyciu, mała siła potrzebna do aktywacji
- Działanie oparte na przewodzącej gumie
- Zakres temperatury pracy  $-40^{\circ}\text{C} \dots +80^{\circ}\text{C}$



### Struktura



### Zakres działania $360^{\circ}$



### Połączenie

