

**Standard internal thread DIN valve connector, IP65 rated.  
Available with different thread style, gaskets and circuitry.**

## Specifications

### ELECTRICAL

Max. Current: 10.0A  
Contact Resistance: ≤15milliohms max.  
Insulation Resistance:  
100Megohms min.  
Max. Conductor: 0.75mm² / 18AWG

### MECHANICAL

Insertion and Withdrawal Force:  
2+GND ≤ 60N

### CERTIFICATION

UL recognized, *cURus* marked, file  
E218123 (product available upon  
request or specific part number)

### PHYSICAL

Durability: min. 50 cycles  
Contact Area: Silver  
Solder Tail Area: Silver  
Operating Temperature with:  
Nitrile Rubber (NBR) Gasket:  
-40° +90°C  
Silicone Gasket: -40° +125°C  
Cable Diameter Range:  
PG7-M12 4.00-6.00mm  
Live Contact Distance: 9.40mm

### ENVIRONMENTAL

IP65 sealing protection  
(IP67 available on request)

## Non Electronic

**C19 2 07 N 2 1**

**SERIES** —  
**C19**=Internal Thread Form Micro  
**POLES** —  
**2**=2Poles+Ground **3**=3Poles+Ground  
**THREAD** —  
**07**=PG7 **M2**=M12x1,5  
**COVER COLOR** —  
**N**=Black Cover **G**=Gray Cover  
**W**=V0 Black Cover (only with UL listed connectors)  
**GROUND POSITION** —  
**2**=H12 **3**=H3 **6**=H6 **9**=H9  
**SCREW & GASKET** —  
**1**=Profile NBR Gasket & Screw, **2**=Flat NBR Gasket & Screw  
**3**=White Silicone Profile Gasket & Screw, **4**=White Silicone Flat Gasket & Screw

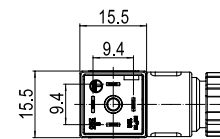
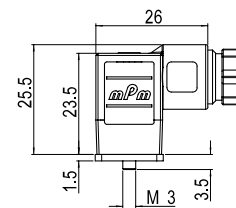
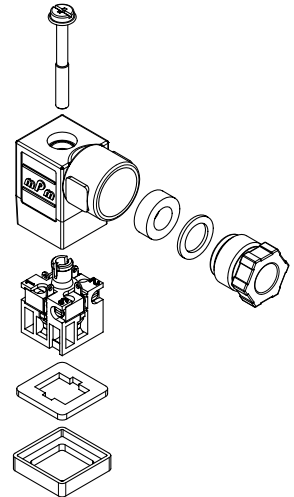
## Electronic

**S19 2 07 T C4 2 1**

**SERIES** —  
**S19**=Internal Thread Form Micro  
**POLES** —  
**2**=2Poles+Ground  
**THREAD** —  
**07**=PG7 **M2**=M12x1,5  
**COVER COLOR** —  
**N**=Black Cover **G**=Gray Cover **T**=Transparent  
**CIRCUIT** —  
see page 33  
**VOLTAGE & LED COLOR** —  
see page 33  
**SCREW & GASKET** —  
**1**=Profile NBR Gasket & Screw, **2**=Flat NBR Gasket & Screw  
**3**=White Silicone Profile Gasket & Screw, **4**=White Silicone Flat Gasket & Screw

## mPm® Field Attachable DIN Valve Connectors

**121023** Micro Form,  
Intern. Thread, Non-Electronic  
**121064** Micro Form,  
Intern. Thread, Electronic



**Note:** UL listed part number identified by adding suffix  
SA at the end of the nomenclature in conjunction with  
UL material (W for black and T for transparent) e.g.  
C28200W2RSNSA

**Build your connector using the intelligent  
part number system and contact your local  
sales representative to identify the proper  
EDP number to use in your purchase orders**

Packaging Type		Poles	Circuit	Voltage	LED Color	Engineering No.	Standard Order No.
Bulk Pack	Mounted	2+Ground	NO	250V AC/300V DC	NO	C19207N21	121023-0433
		3+Ground	NO	250V AC/300V DC	NO	C19307N21	121023-0464
		2+Ground	C4	24V AC/DC	yellow	S19207TC4H1	121064-0871
			C4	230V AC/DC	yellow	S19207TC4M1	121064-1342