

**IP67 rated DIN valve connector with improved strain relief. Cable retention force increased up to 20% over internal nut style. Enlarged cable range that covers the internal thread connectors cable range. Conforms to EN 175301-803**

## Specifications

### ELECTRICAL

Current: max. 10.0A  
Contact Resistance: ≤15milliohms max.  
Insulation Resistance:  
100Megohms min.  
Max. Conductor: 0.75mm<sup>2</sup> / 18AWG

### MECHANICAL

Insertion and Withdrawal Force:  
2+GND ≤ 60N

### CERTIFICATION

UL recognized, cURus marked, file E218123 (product available upon request or specific part number)

### PHYSICAL

Durability: min. 50 cycles  
Contact Area: Silver  
Solder Tail Area: Silver  
Operating Temperature with:  
Nitrile Rubber (NBR) Gasket:  
-40° +90°C  
Silicone Gasket: -40° +125°C  
Cable Diameter Range: 3.00-5.50mm  
Live Contact Distance: 8.00mm

### ENVIRONMENTAL

IP67 Sealing Protection

## mPm® Field Attachable DIN Valve Connectors

**121204** Form C, Ext. Thread,  
Non-Electronic

**121210** Form C, Ext. Thread,  
Electronic

## Non Electronic

**C25 2 00 N 0 T \*\***

### SERIES

C25=External Thread Form C

### POLES

2=2Poles+Ground 3=3Poles+Ground

### THREAD

00=External Thread

### COVER COLOR

N=Black Cover G=Gray Cover

W=V0 Black Cover (only with UL listed connectors)

### GROUND POSITION

0=Unmounted 2=H12 3=H3 6=H6 9=H9

### SCREW & GASKET

T=Profile NBR Gasket & IP67 Screw, U=Profile Silicone Gasket & IP67 Screw

### PACKAGING STYLE

no digit=Single Bag Unmounted, SN=Bulk Pack Mounted, CN=Bulk Pack Unmounted

**IP67**

## Electronic

**S25 2 00 T C4 2 0 T \*\***

### SERIES

S25=External Thread Form C

### POLES

2=2Poles+Ground

### THREAD

00=External Thread

### COVER COLOR

N=Black Cover G=Gray Cover T=Transparent

### CIRCUIT

see page 33

### VOLTAGE & LED COLOR

see page 33

### GROUND POSITION

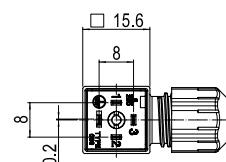
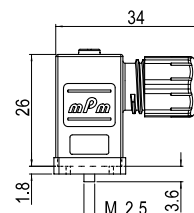
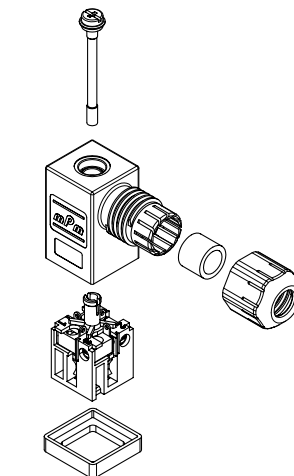
0=Unmounted 2=H12 3=H3 6=H6 9=H9

### SCREW & GASKET

T=Profile NBR Gasket & IP67 Screw, U=Profile Silicone Gasket & IP67 Screw

### PACKAGING STYLE

no digit=Single Bag Unmounted, SN=Bulk Pack Mounted, CN=Bulk Pack Unmounted



**Note:** UL listed part number identified by adding suffix SA at the end of the nomenclature in conjunction with UL material (W for black and T for transparent) e.g. C28200W2RSNSA

**Build your connector using the intelligent part number system and contact your local sales representative to identify the proper EDP number to use in your purchase orders**

Packaging Type		Poles	Circuit	Voltage	LED Color	Engineering No.	Standard Order No.
Single Bag	Unmounted	2+Ground	NO	250V AC/300V DC	NO	C25200N0T	121204-0001
Bulk Pack	Mounted		NO	250V AC/300V DC	NO	C25200N2TSN	121204-0010
Single Bag	Unmounted		C4	24V AC/DC	yellow	S25200TC4H0T	121210-0042
Bulk Pack	Mounted		C4	24V AC/DC	yellow	S25200TC4H2TSN	121210-0342
Single Bag	Unmounted		C4	230V AC/DC	yellow	S25200TC4M0T	121210-0045
Bulk Pack	Mounted		C4	230V AC/DC	yellow	S25200TC4M2TSN	121210-0345