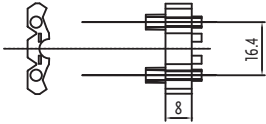
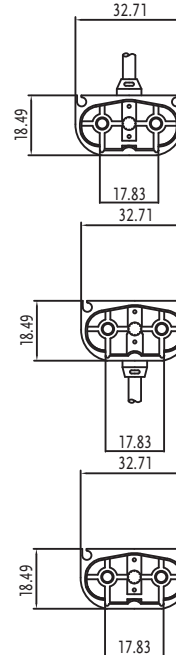
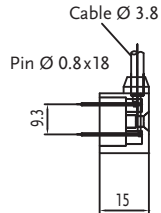


# Contact-Optima 3100.4026

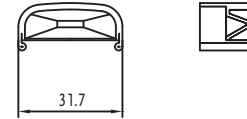
Optima-Plus connectors, internal element:  
supplied with Article 3020.400xC /  
3020.410xC and 3031.4006C  
incl. Torx screws



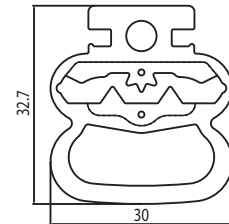
Optima-Plus connectors, external element:  
3020.400xC discharge to compensation chamber  
3020.410xC discharge to C-rail  
3031.4006C resistor



Rubber cap:  
3050.4026  
for profile 3100.4026  
(fits all external elements)



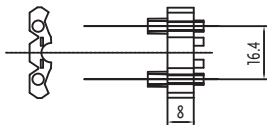
Contact-Optima 3100.4026:



# Contact-Optima 3100.4026N

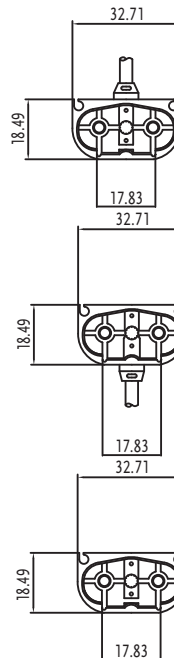
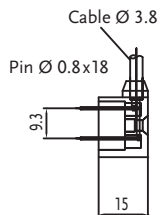
Optima-Plus connectors, internal element:

supplied with Article 3020.400xC /  
3020.410xC and 3031.4006C  
incl. Torx screws



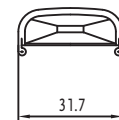
Optima-Plus connectors, external element:

3020.400xC discharge to compensation chamber  
3020.410xC discharge to C-rail  
3031.4006C resistor

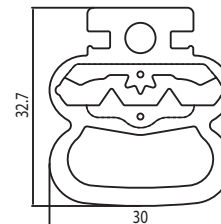


Rubber cap:

3050.4026N  
for profile 3100.4026N  
(fits all external elements)



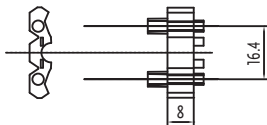
Contact-Optima 3100.4026N:



# Contact-Optima 3100.4053

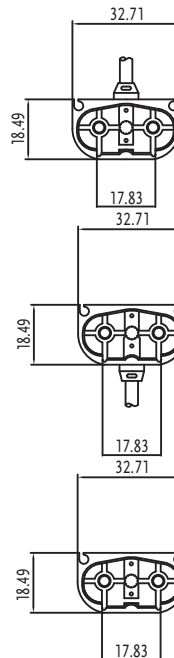
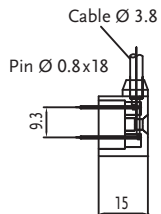
Optima-Plus connectors, internal element:

supplied with Article 3020.400xC /  
3020.410xC and 3031.4006C  
incl. Torx screws



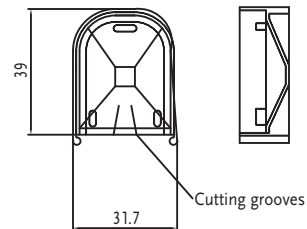
Optima-Plus connectors, external element:

3020.400xC discharge to compensation chamber  
3020.410xC discharge to C-rail  
3031.4006C resistor



Rubber cap:

3050.4053  
for profile 3100.4053  
(fits all external elements)



Contact-Optima 3100.4053:

