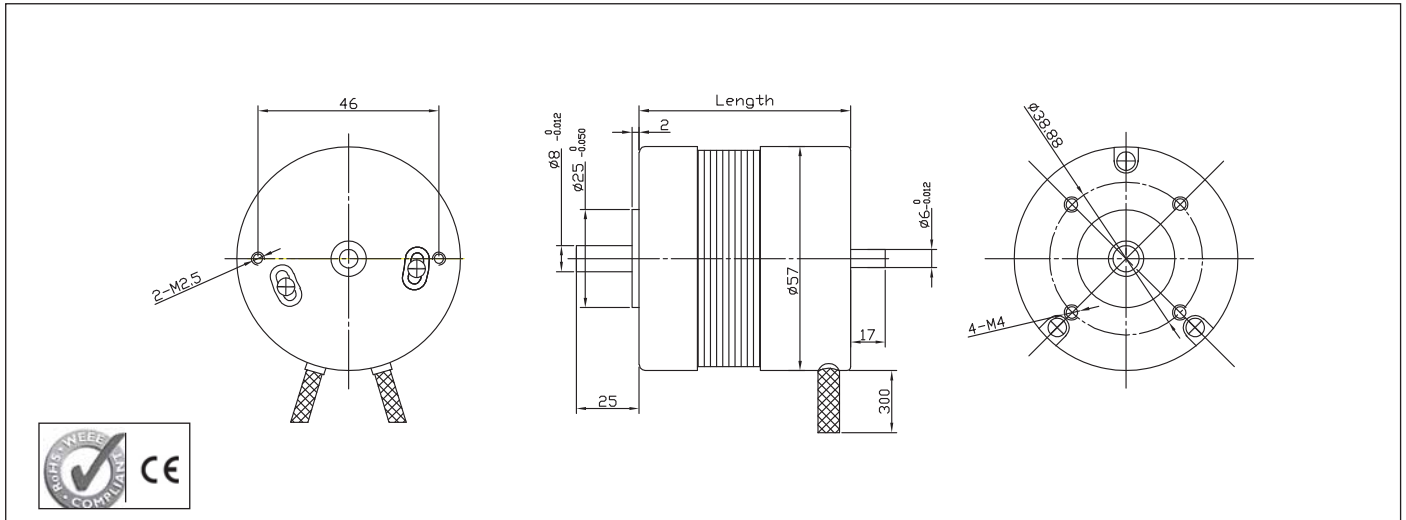


57BL Brushless Motor



Characteristics

HALL EFFECT ANGLE
120 ° ELECTRIC ANGLE

SHAFT RUN OUT
0,025 MM

INSULATION CLASS
B

RADIAL PLAY
0,02 MM 450G LOAD

AXIAL PLAY
0,08 MM 450G LOAD

MAX RADIAL FORCE
75 N (10 MM FROM FLANGE)

MAX AXIAL FORCE
15 N

DIELECTRIC STRENGTH
500 VDC FOR ONE MINUTE

INSULATION RESISTANCE
100 M OHM MIN. 500 VDC

Specification

Model	57BL45	57BL54	57BL74	57bl94	57bl116	
1 N° OF POLE	4	4	4	4	4	
2 N° OF PHASE	3	3	3	3	3	
3 RATED VOLTAGE	V	36	36	36	36	
4 RATED SPEED	RPM	4000	4000	4000	4000	
5 RATED TORQUE	NM	0,055	0,11	0,22	0,32	0,42
6 MAX PEAK TORQUE	NM	0,16	0,35	0,68	0,98	1,3
7 TORQUE CONSTANT	NM/A	0,053	0,063	0,063	0,063	0,063
8 LINE TO LINE RESISTANCE	Ω	4,1	1,5	0,65	0,45	0,35
9 LINE TO LINE INDUCTANCE	MH	10	4,5	2,1	1,4	1
10 MAX PEAK CURRENT	A	3,5	5,5	9,8	16,5	20,5
11 LENGTH	MM	45	54	74	94	116
12 ROTOR INERTIA	G-CM ²	30	75	119	173	230
13 WEIGHT	KG	0,25	0,5	0,75	1	1,25

Connection

LEAD N°	COLOR	GAUGE	FUNCTION
1	RED	UL1430 AWG26	VCC HALLSENSOR +5 TO +24 VDC
2	BLUE	UL1430 AWG26	HALL A
3	GREEN	UL1430 AWG26	HALL B
4	WHITE	UL1430 AWG26	HALL C
5	BLACK	UL1430 AWG26	GND HALL SENSOR GROUND
6	YELLOW	UL1430 AWG20	PHASE U
7	RED	UL1430 AWG20	PHASE V
8	BLACK	UL1430 AWG20	PHASE W