

# CAM SWITCHES

## ▶ AMMETER SWITCHES

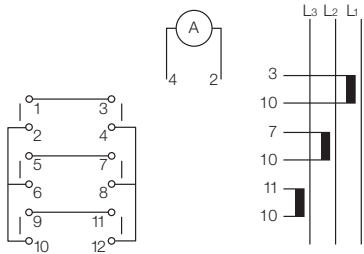
 Technical Info (p. 224)

### 3 CURRENT TRANSFORMERS WITH COMMON POINT

IP40 standard - IP65 available upon request

Contact Configuration - 8151

No. OF CONTACTS	0	L1	L2	L3
1 - 2	X	X		
3 - 4	X	X		
5 - 6		X	X	
7 - 8		X	X	
9 - 10	X		X	X
11 - 12	X		X	X

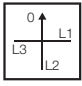
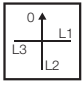


NY11AQ1



NY11AX80

Mounting and Dimensions see pg 226 to 229

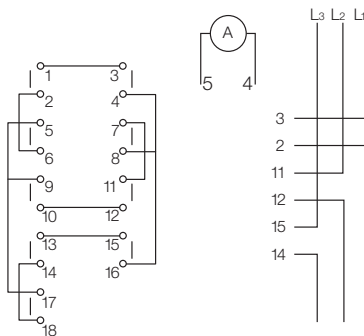
Switch Series	General use rating - amps	Mounting	Number of contacts	Positions	Designation	Part Number
PR12	12	TWO FIXING SCREWS	6		PR12 8151 A4 E Q48PN50	<b>NY11AQ1</b>
PR12	12	Ø22MM SINGLE HOLE	6		PR12 8151 A4 E N48MD50	<b>NY11AX80</b>

### WITHOUT CURRENT TRANSFORMER

IP40 standard - IP65 available upon request

Contact Configuration - 8164

No. of contacts	0	L1	L2	L3
1 - 2	X	X		
3 - 4	X	X		
5 - 6		X	X	
7 - 8		X	X	
9 - 10	X		X	X
11 - 12	X		X	X
13 - 14	X		X	X
15 - 16		X	X	
17 - 18		X	X	

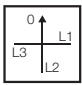
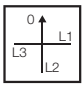


NY14AQ1



NY14AX80

Mounting and Dimensions see pg 226 to 229

Switch Series	General use rating - amps	Mounting	Number of contacts	Positions	Designation	Part Number
PR12	12	TWO FIXING SCREWS	9		PR12 8164 A4 E Q48PN50	<b>NY14AQ1</b>
PR12	12	Ø22MM SINGLE HOLE	9		PR12 8164 A4 E N48MD50	<b>NY14AX80</b>

# CAM SWITCHES

## ► Technical Specifications

UL/CSA Characteristics	PR 12	PR 17	PR 21	PR 26	PR 40	PR 63	PR 125	PR 160
<b>► UL/CSA</b>								
1 PHASE 110/120 VAC	0.5 HP	1 HP	1.5 HP	2 HP	3 HP	5 HP	N/A	N/A
3 PHASE 110/120 VAC 220/240 VAC 440/480 VAC 550/600 VAC	1 HP	2 HP	3 HP	3 HP	7.5 HP	10 HP	N/A	N/A
	3 HP	5 HP	5 HP	7.5 HP	15 HP	20 HP	N/A	N/A
	5 HP	7.5 HP	10 HP	15 HP	30 HP	40 HP	N/A	N/A
	3 HP	10 HP	15 HP	20 HP	30 HP	40 HP	N/A	N/A
GENERAL USE (600 V) (MOTOR CONTROLLER)	12 A	16A	20 A	25 A	50 A	63 A	N/A	N/A
UL 508 RECOGNIZED	YES	YES	YES	YES	YES	YES	No	No
CSA CERTIFIED	YES	YES	YES	YES	YES	YES	No	No
<b>IEC Characteristics</b>								
<b>► For thermal current AC-20 Ith I<sub>c</sub>(A)</b> (IEC 60 947-3)	20	25	32	40	63	80	200	250
<b>► Rated operating current for AC-21 A I<sub>e</sub>(A)</b> (IEC 60 947-3)								
Switching of resistive loads including moderate overloads	16	20	25	32	50	80	160	200
<b>► Rated operating current for AC-15 A I<sub>e</sub>(A) at 230V AC</b> (IEC 60 947-3)								
Control of electromagnetic loads	6	8	10	12	-	-	-	-
<b>► Performance in AC 23 (kW)</b> (IEC 60 947-3)								
Switching of motors or other highly inductive loads								
- 3 x 230 V	4	5.5	7.5	11	15	18.5	-	-
- 3 x 400 V	7.5	11	11	11	22	25	-	-
- 3 x 500 V	5.5	11	11	11	25	25	-	-
- 3 x 690 V	4	10	10	11	18.5	22	-	-
<b>► Performance in AC 3</b> (IEC 60 947-3)								
Control of squirrel-cage motors starting and switching off motors while running								
- In kW								
- 3 x 230 V	3	4	4	5.5	11	15	-	-
- 3 x 400 V	4	7.5	7.5	11	18.5	22	-	-
- 3 x 500 V	5.5	7.5	7.5	11	18.5	22	-	-
- 3 x 690 V	3	7.5	7.5	11	18.5	22	-	-

## CAM SWITCHES

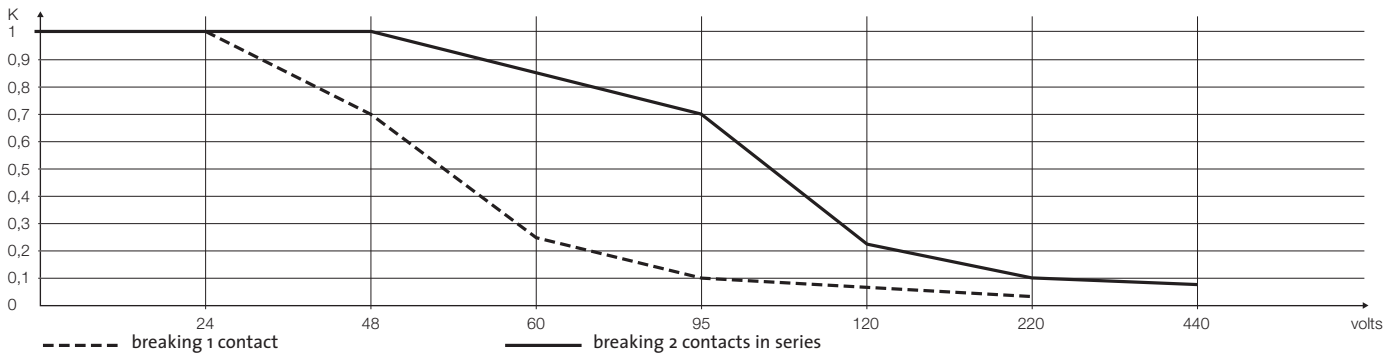
### ► Technical Specifications

IEC Characteristics	PR 12	PR 17	PR 21	PR 26	PR 40	PR 63	PR 125	PR 160
<b>► Performance in AC 3 - cont.</b>								
- In HP (for reference)								
- 3 x 230 V	4	5.5	5.5	7.5	15	20	-	-
- 3 x 400 V	5.5	10	10	15	25	30	-	-
- 3 x 500 V	7.5	10	10	15	25	30	-	-
- 3 x 690 V	4	10	10	15	25	30	-	-
<b>► Rated insulation voltage <math>U_i</math> (V)</b>								
- Max. rated voltage $U_e(v)$ IEC	690	690	690	690	690	690	690	690
- CSA (Canada)	600	600	600	600	600	600	600	600
- UL (USA)	600	600	600	600	600	600	600	600
<b>► Rated short time withstand current <math>I_{cw}</math> (A) for 1 sec</b>								
	300	400	420	800	1000	1000	2000	2400
<b>► Maximum wire size (mm<sup>2</sup>)</b>								
- rigid	4	6/4 <sup>(1)</sup>	6/4 <sup>(1)</sup>	6	16	16	ø 8 screw for eyelet	
- flexible	2.5	4	4	6	16	16	ø 8 screw for eyelet	
<b>► Maximum wire size (AWG)</b>								
- rigid	10	8/10 <sup>(1)</sup>	8/10 <sup>(1)</sup>	8	6	6		
- flexible	14	12	12	8	6	6		
(1): These values correspond to terminals with jumpers								
<b>► Mechanical durability</b> 1,250,000 operations, maximum rate 150 operations per hour								
<b>► Operating temperature limits</b> - 20°C to + 70°C - 4°F to + 158°F (beyond these limits consult us)								

### ► Rated operating current in DC-1 low inductive loads (< 1 ms)

	PR 12	PR 17	PR 21	PR 26	PR 40	PR 63	PR 125	PR 160
Rated operating current $I_e$ (A) 24 V DC	16	20	25	32	50	80	-	-

$I_e$  (A): rated current for breaking 1 contact. For higher voltages you must use a reduction coefficient K in the following graph

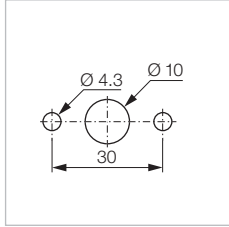


reduction coefficient K for rated operating current in DC-1 continuous current

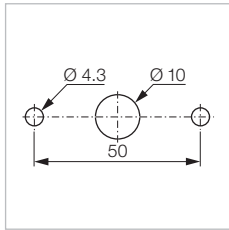
# CAM SWITCHES

## ► Mounting

### 2 SCREWS - 30 OR 50 MM INTERVAL

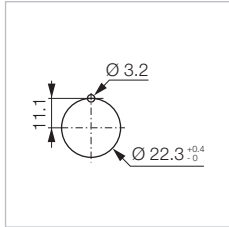


PR 12  
PR 17  
PR 21  
PR 26



PR 40  
PR 63

### SINGLE HOLE MOUNTING Ø 22



For PR12 only

□ 48 legend plate with handle  
HANDLE  
LEVER  
KEY

