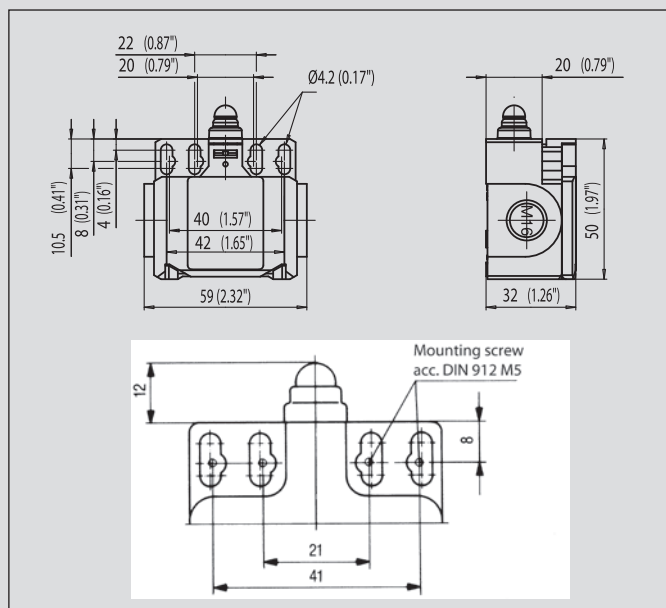


# Insulation-Enclosed Limit Switches

## Bi2



### Recommended use

Thanks to its two cable entries, this switch is ideal for use in series-connected monitoring facilities.

### Product advantages

- Protection class IP 65 to VDE 0470 T1
- Enclosure and cover PA 6, self-extinguishing (UL-94 V0)
- Actuator can be repositioned by 4 x 90°
- Cable entry 2x M16 x 1.5
- Connection designation conforming to DIN EN 50013

### Options

- Available with M12 connector
- AS interface variants available
- Preassembled with customer-specific cables and connectors on request

### Design layout

- Slow-action and snap-action contacts
- Versions: 1 NC / 1NO, 2 NC
- All NC contacts with  $\oplus$  in the circuit diagram are positively opening contacts
- Type: Zb (galvanically isolated changeover contact)

### Mounting

- Two M4 adjustment slots (distance between centres 22 mm)
- Two M4 adjustment slots (distance between centres 42 mm)
- Two M5 holes (distance between centre 21 mm) for safety applications
- Two M5 holes (distance between centre 41 mm) for safety applications without additional securing element
- Front mounting

### Installation advantages

- Cover opening range 135° (cover can also be detached from hinge)
- Screw connections with self-lifting clamping plates
- Easy-action cover lock (close and press)
- Cover additionally secured with screw
- 2 cable entries for through-wiring

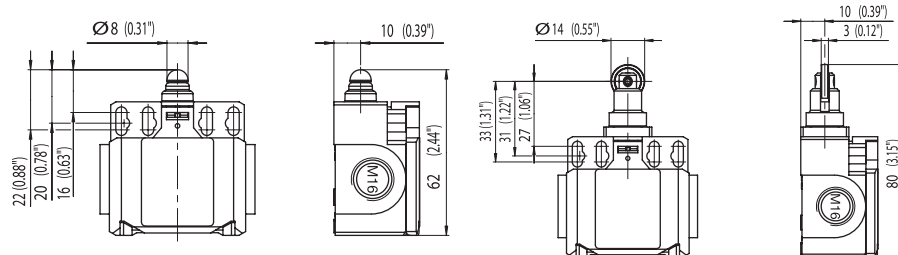
### Technical data

Electrical data		
Rated insulation voltage	U <sub>i</sub> max.	400 V AC
Conventional thermal current <sup>①</sup>	I <sub>th</sub>	10 A
Rated operating voltage	U <sub>e</sub> max.	240 V AC
Utilisation category		AC15, U <sub>e</sub> /I <sub>e</sub> 240 V/3 A
Short-circuit protection (up to) <sup>①</sup>		Fuse 10 A gL/gG
Protection class		II, Insulated
Mechanical data		
Enclosure material		Thermoplastic, glass fibre-reinforced
Ambient temperature		-30 °C to +80 °C
Mechanical service life (up to) <sup>①</sup>		10 x 10 <sup>6</sup> switching cycles
B10d (up to) <sup>①</sup>		20 Mio.
Switching frequency		≤ 100/min.
Type of connection		Screw connections
Conductor cross sections		Single-wire 0.5 – 1.5 mm <sup>2</sup> or Stranded wire with ferrule 0.5 – 1.5 mm <sup>2</sup>
Cable entry		2 x M16 x 1,5
Protection class		IP 65 conforming to EN 60529; DIN VDE 0470 T1
Standards		
VDE 0660 T100, DIN EN 60947-1, IEC 60947-1 VDE 0660 T200, DIN EN 60947-5-1, IEC 60947-5-1		

① Depending on switching system. See Table on Pages 70 – 73.

W

RIW



## Switching operation

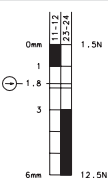
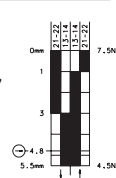
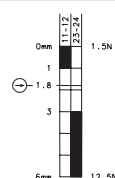
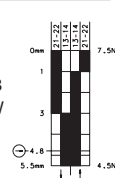
## Slow-action

## Snap-action

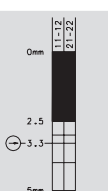
## Slow-action

## Snap-action

1 NC / 1 NO contact

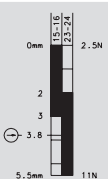
**6085103100**  
 BI2-U1Z W

**6085153107**  
 BI2-SU1Z W

**6085117101**  
 BI2-U1Z RIW

**6085167108**  
 BI2-SU1Z RIW


2 NC contacts

**6085803116**  
 BI2-A2Z W


2 NO contacts

 1 NC / 1 NO contact  
 Overlapping

**6085303115**  
 BI2-UV1Z W


## Approvals



Replacement actuator: –

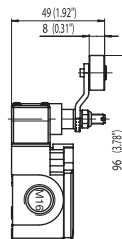
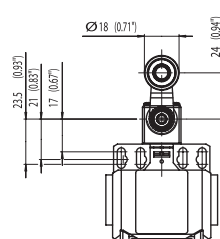
Replacement actuator: –

 Special features / variants  
 (on request)

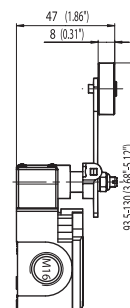
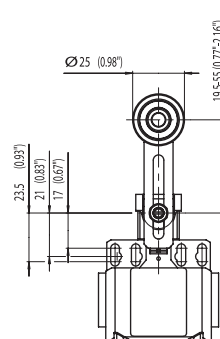
 Special features / variants  
 (on request)

- With steel roller

## AH



## AV



### Switching operation

1 NC / 1 NO contact

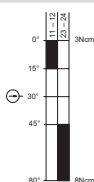
2 NC contacts

2 NO contacts

1 NC / 1 NO contact  
Overlapping

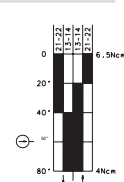
### Slow-action

6085135104  
BI2-U1Z AH



### Snap-action

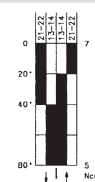
6085185111  
BI2-SU1Z AH



### Slow-action

### Snap-action

6085186112  
BI2-SU1 AV



### Approvals



Replacement actuator: 3918351166

Replacement actuator: 3918360984

### Special features / variants (on request)

- Available with different actuating directions
- With steel roller
- Various roller diameters
- Cranked or straight lever
- Various lever lengths

### Special features / variants (on request)

