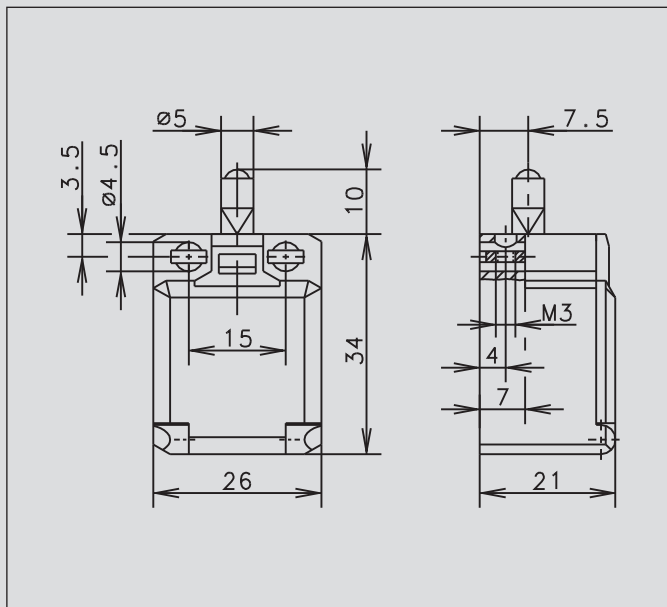


## C2



### Recommended use

Ideal for safety applications and position monitoring in confined spaces.

### Product advantages

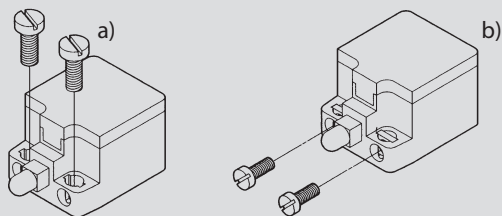
- Miniature switch for safety applications
- Two-channel safety monitoring possible
- With captive snap-on cover
- Small hysteresis in snap action system

### Design layout

- Slow-action and snap-action contacts
- Versions: 1 NC / 1NO, 2 NC, 2 NO
- All NC contacts with  $\oplus$  in the circuit diagram are positively opening contacts
- Type: Zb (galvanically isolated changeover contact)

### Mounting

- Also suitable for front mounting (depending on type)



- a) 2 round holes for M4 screws
- b) 2 Integrated nuts for front mounting for M3 screws (depending on type)

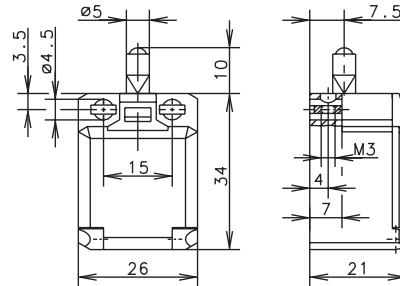
### Installation advantages

- Snap-on cover can be released with screwdriver
- Cover opening range 180° (cover can also be detached from hinge)
- Cover protects switching element during installation
- Screw connections with self-lifting clamping plates
- Cover transparent for adjustment and visual inspection
- Easy-action cover lock (close and press)

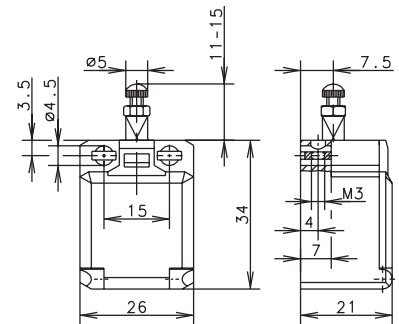
### Technical data

Electrical data		
Rated insulation voltage	$U_i$ max.	240 V AC
Conventional thermal current	$I_{the}$	10 A
Rated operating voltage	$U_e$ max.	240 V
Utilisation category	$U_e/I_e$	AC-15, $U_e/I_e$ 240 V/3 A
Short-circuit protection		Fuse 6 A gL/gG
Protection class		II, Insulated
Mechanical data		
Enclosure material		Thermoplastic, glass fibre-reinforced (UL 94-V0)
Ambient temperature		-30 °C to +80 °C
Mechanical service life		3 x 10 <sup>6</sup> switching cycles
B10d		6 Mio.
Switching frequency		≤ 100/min
Type of connection		Screw connections
Conductor cross sections		Single-wire 0.5 – 1.5 mm <sup>2</sup> or Stranded wire with ferrule 0.5 – 1.5 mm <sup>2</sup>
Cable entry		Rectangle 8.5 x 3.5 mm
Protection class		IP20 conforming to EN 60529; DIN VDE 0470 T1
Standards		
VDE 0660 T100, DIN EN 60947-1, IEC 60947-1		
VDE 0660 T200, DIN EN 60947-5-1, IEC 60947-5-1		

## W



## ST

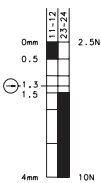


## Switching operation

**1 NC / 1 NO contact**

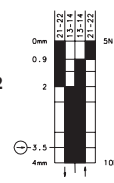
### Slow-action

600810  
C2-U1Z



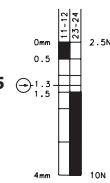
### Snap-action

**6008351002**  
C2-SU1Z



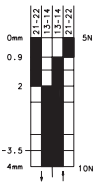
### Slow-action

6008104025  
C2-U1Z ST



### Snap-action

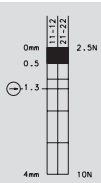
**6008354026**  
C2-SU1Z ST



**2 NC contacts**

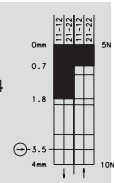
## 6008801003

C2-A2Z



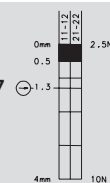
6008851004

C2-SA2Z



## 6008804027

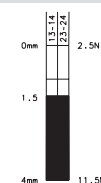
C2-A2Z SI



**2 NO contacts**

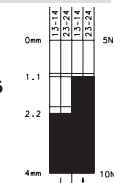
**6008801005**

C2-E2



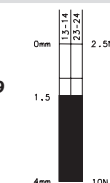
**6008851006**

CZ-SEZ



6008804029

C2-E231



**1 NC / 1 NO contact  
Overlapping**

### Approvals



**Replacement actuator: –**

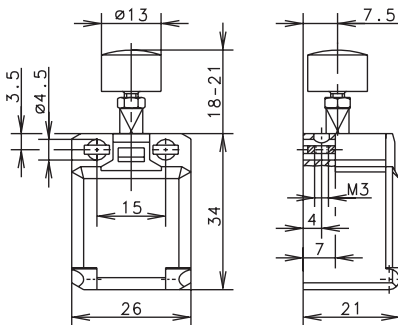
**Special features / variants**  
(on request)

**Replacement actuator: –**

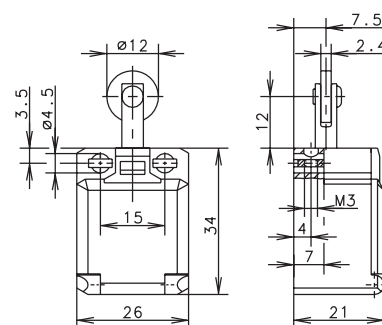
### Special features / variants

- Actuator length adjustable with adjusting screw

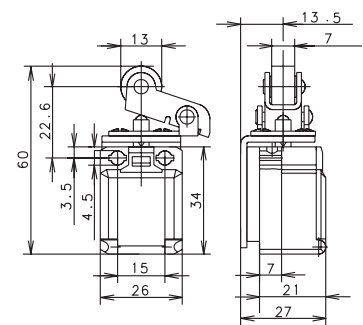
K



R

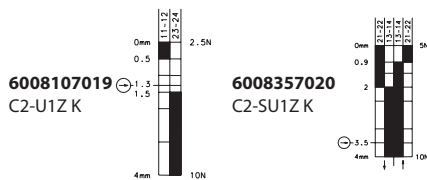


O.M.



Slow-action

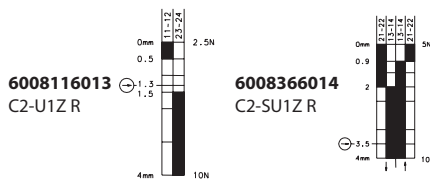
Snap-action



**6008357020**  
C2-SU1Z K

Slow-action

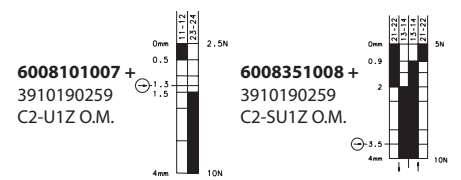
Snap-action



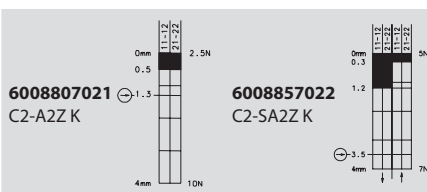
**6008366014**  
C2-SU1Z R

Slow-action

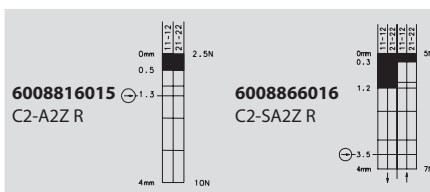
Snap-action



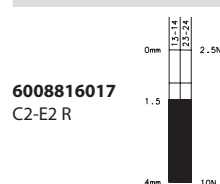
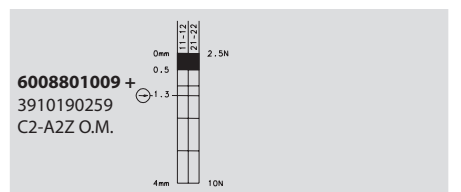
**6008351008 + 3910190259**  
C2-SU1Z O.M.



**6008857022**  
C2-SA2Z K



**6008866016**  
C2-SA2Z R



Replacement actuator: –

Special features / variants

- Button actuator, for manual operation



Replacement actuator: –

Special features / variants

(on request)

- Also available with roller turned by 90°

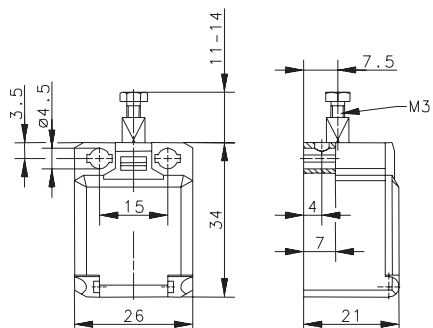


Replacement actuator: 3910190259

Special features / variants

(on request)

BISTABLE O.M.



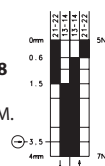
Switching operation

Slow-action

Snap-action

1 NC / 1 NO contact

**6108351008**  
C2-SU1Z  
BISTABLE O.M.



2 NC contacts

2 NO contacts

1 NC / 1 NO contact  
Overlapping

Approvals

Replacement actuator: –

**Special features / variants**

- Bistable characteristics, actuator must be returned to initial position by external actuation (pulling)
- Actuator length adjustable with M3 adjusting screw