

# Preset counters, electronic

<b>LED preset counters</b>	<b>Dual preset counters with 4 outputs and analog output (AC+DC)</b>	<b>572</b>
----------------------------	--	------------



Counter series for demanding applications with two individually scalable encoder inputs, each A, /A, B, /B, for count frequencies up to 1 MHz per channel.

Programmable operating modes include position or event counter, totaliser, difference counter, cut-to-length display, diameter calculation and many more.



Preset  
counters

<b>AC/DC</b> 24/17...30V	<b>DIN 96 x 48</b>	<b>IP65</b>	<b>max.</b> 1 MHz			<b>6/8 LED</b>	<b>DC OUT</b> 5 / 24 V		<b>4</b>	<b>RS 232 485</b>
Power supply	DIN front bezel	High protection level	2 inputs	Operation with gloves	TTL, HTL and RS422 input	LED display	2 x sensor power supply	Analog output optional	Transistor output	Interface

## Innovative

- 3 display values: counter 1, 2 as well as calculation-based display.
- 2 separate freely scalable count inputs: HTL or TTL (also with inverted inputs) max. input frequency 1 MHz/channel.
- Very bright LED display, 15 mm (6-digit) and 10 mm (8-digit) high.
- 4 freely programmable fast solid-state outputs, each with 350 mA output current.
- Step or tracking presets.
- Simple programming – with function codes, dependent on the operating mode selected.
- With 8 different fixed count functions, such as simple count, difference count and total count of both inputs, batch counter etc.

## Compact and multifunctional

- One device caters for AC and DC power supplies.
- Simple programming with 4 keys and programmable dual functions.
- Can be used as counter or position display with limit values, where 2 values are monitored or calculated with respect to each other.
- 4 fast, programmable inputs with various functions, such as reset, gate, display memory (store), reference input or switching between the display values.
- Scalable analog output 0/4 ... 20 mA,  $\pm 10$  V or 0 ... 10 V.
- RS232 interface as standard (RS485 optional), for parameter setting, readout of values or for modifications during operation.
- 2 auxiliary power supplies for sensors: 5.2 V DC and 24 V DC.

## Order specifications

### 4 fast switch outputs and serial interface (RS232)

6 digits
6 digits, RS485
6 digits, scalable analog outputs
8 digits
8 digits, RS485
8 digits, scalable analog outputs

### Order-No.

<b>6.572.0116.D05</b>
<b>6.572.0116.D75</b>
<b>6.572.0116.D95</b>
<b>6.572.0118.D05</b>
<b>6.572.0118.D75</b>
<b>6.572.0118.D95</b>

### Delivery specification

- Controller 572
- Gasket
- Fastening set
- Instruction manual German/English

## Accessories

### Mounting frame

with cut-out  
92 x 45 [3.62 x 1.77]



### Dimensions in mm [inch]

For snap-on mounting on 35 [1.38] top-hat DIN rail,  
for counters 96 x 48 [3.78 x 1.89]

grey

### Order no.

**G300005**

## OS2 software for parameter setting

can be downloaded at [www.kuebler.com](http://www.kuebler.com)

Suitable gaskets as well as further accessories can be found in the accessories section or in the accessories area of our website at: [www.kuebler.com/accessories](http://www.kuebler.com/accessories).

# Preset counters, electronic

<b>LED preset counters</b>	<b>Dual preset counters with 4 outputs and analog output (AC+DC)</b>	<b>572</b>
----------------------------	--	------------

## Technical data

General technical data		
Display	6 digits	LED display, 15 mm mm [0.59"]high
	8 digits	LED display, 10 mm mm [0.39"]high
Operating temperature	0°C ... +45°C [+32°F ... +113°F] (non-condensing)	
Storage temperature	-25°C ... +70°C [-13°F ... +158°F]	

Electrical characteristics		
Power supply	24 V AC, + 10% 24 (17 ... 30) V DC	
Current consumption DC	100 mA + current consumption encoder	
Connected load AC	15 VA	
Auxiliary power supply output for sensors	2 x 5.2 V DC, each 150 mA	
	2 x 24 V DC, each 120 mA	
EMC	Emitted interference	EN 61000-6-3
	Immunity to interference	EN 61000-6-2
Device safety	Designed to	EN 61010 part 1
	Protection class	2
	Application area	Pollution level 2

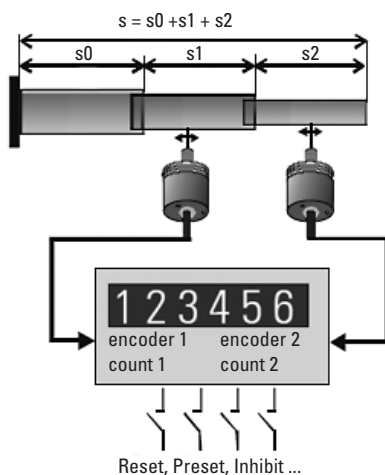
Mechanical characteristics		
Housing	Noryl UL94-V-0	
Screw terminal	Cable cross-section	max. 1.5 mm <sup>2</sup> [AWG 25]
Protection	IP65 (front side)	
Weight	approx. 250 g [8.82 oz]	

Inputs		
<b>Universal incremental encoder inputs</b>		
Count frequency (per encoder)	RS422 and TTL with Inv.	1 MHz
	HTL asymmetric	200 kHz
	TTL asymmetric	200 kHz
<b>Control inputs HTL</b>		
Ri (input resistor)		3.3 kOhm
Switching level	LOW	< 2.5 V
	HIGH	> 10 V
Min. pulse duration		50 µs

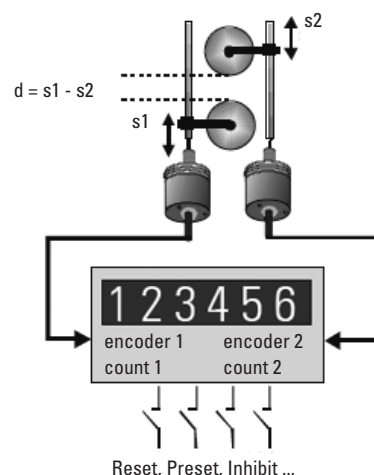
Outputs		
<b>Switch outputs</b>		
4 fast power transistors		5 ... 30 V DC, 350 mA
Reaction time		< 1ms <sup>1)</sup>
Inductive loads require a freewheeling diode		
<b>Serial interface</b>		RS232
2400 ... 38400 Baud		RS485 (6.572.011X.D75)
<b>Analog outputs</b>		
Current		0 / 4 ... 20 mA
Load		max. 270 Ohm
Voltage		0 ... +10 V (max. 2 mA)
Resolution		14 bit
Precision		0.1 %
Reaction time		< 1 m

## Application examples

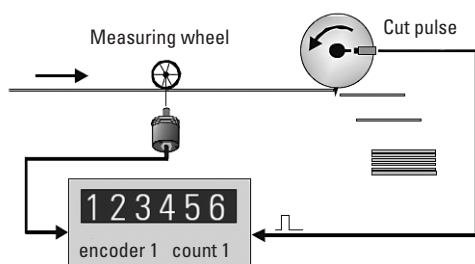
### Total-Position display



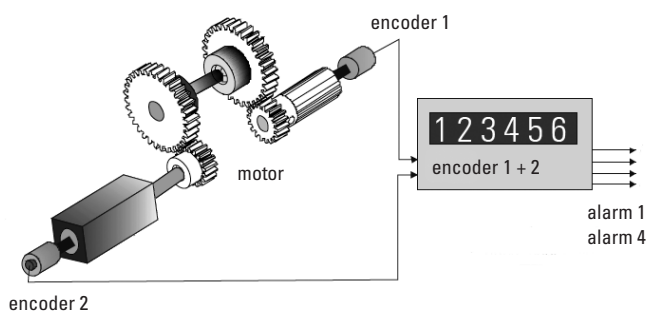
### Difference-Position display



### Measurement of the effective cut amount



### Monitoring of torsion, shafts or gear breakage



1) Intensive serial communication can temporarily prolong the reaction time

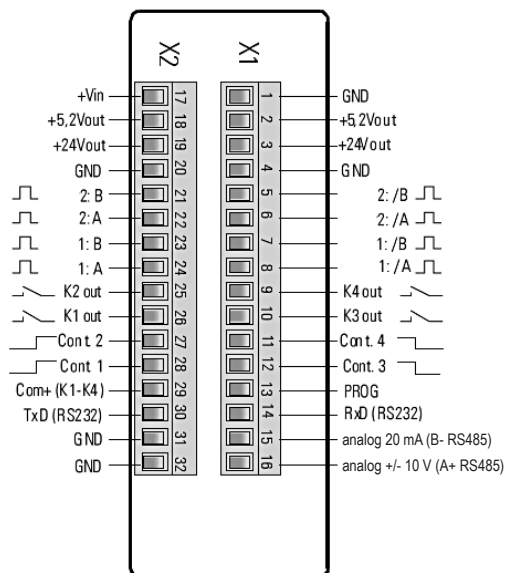
# Preset counters, electronic

## LED preset counters

## Dual preset counters with 4 outputs and analog output (AC+DC)

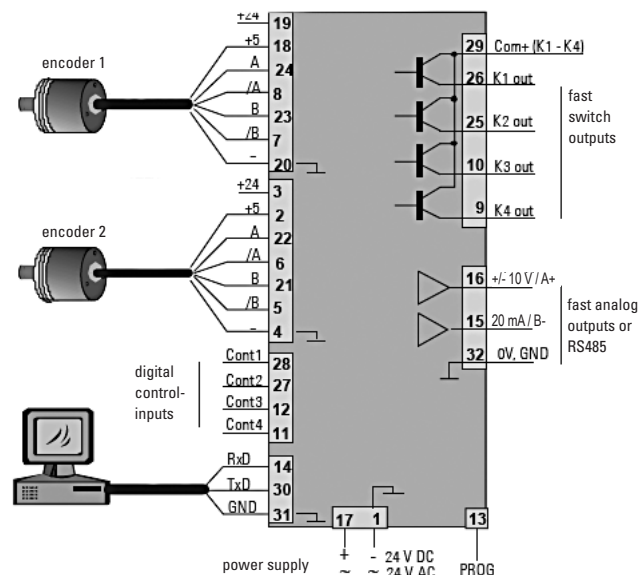
572

### Terminal assignment



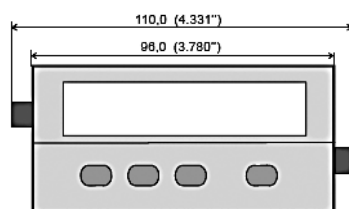
### Connection examples

Example shows encoder with 5 V-supply and TTL / RS422-output



### Dimensions

Dimensions in mm [inch]



Panel cut-out 92 x 45 mm [3.62 x 1.77]

