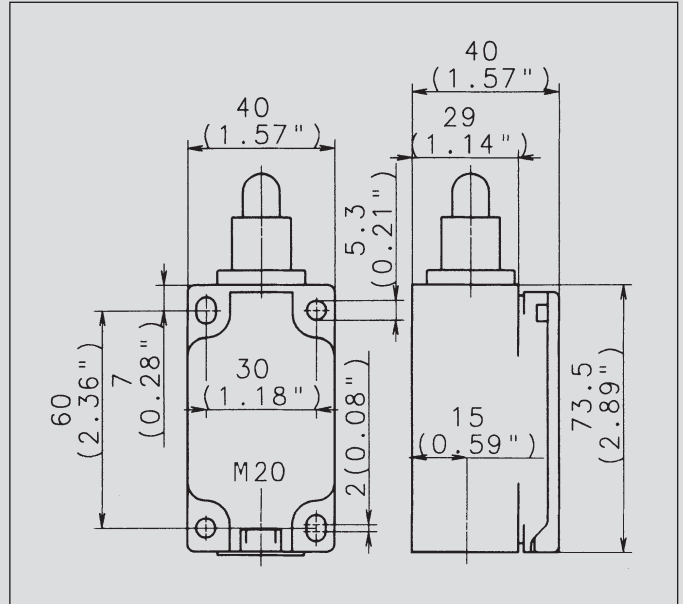


Insulation-Enclosed Limit Switches

ENK



Recommended use

Thanks to its design and its metal actuator, the ENK limit switch is particularly suitable for applications requiring a sturdy safety switch made of plastic.

Product advantages

- Standard switch conforming to DIN EN 50041
- Standard actuator conforming to DIN EN 50041 (see page 15)
- Protection class IP 65 to VDE 0470 T1
- Enclosure and cover PA 6, (UL-94-V0)
- Actuator can be repositioned by 4 x 90°
- Cable entry M20 x 1.5
- Connection designation conforming to DIN EN 50013
- Metal actuators for high loads

Options

- Available with M12 connector
- AS interface variants available
- Preassembled with customer-specific cables and connectors on request

Design layout

- Slow-action and snap-action contacts
- Versions: 1 NC / 1NO, 2 NC, 3 NC, overlapping contacts
- Latching function on request
- All NC contacts with \oplus in the circuit diagram are positively opening contacts
- Type: Zb (galvanically isolated changeover contact)

Mounting

- 2 adjustment slots for M5 screws
- 2 holes for M5 mounting screws in safety applications

Installation advantages

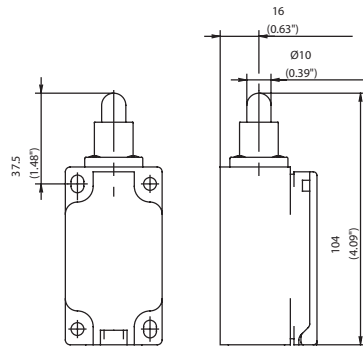
- Snap-on cover can be released with screwdriver
- Cover opening range 150° (cover can also be detached from hinge)
- Cover protects switching element during installation
- Screw connections with self-lifting clamping plates
- Easy-action cover lock (close and press)

Technical data

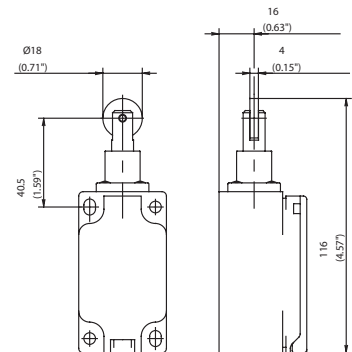
Electrical data		
Rated insulation voltage	U _i max.	400 V AC
Conventional thermal current (up to) ^①	I _{the}	10 A
Rated operating voltage	U _e max.	240 V
Utilisation category	AC-15, U _e /I _e 240 V/3 A	
Short-circuit protection (up to) ^①	Fuse 10 A gL/gG	
Protection class	II, Insulated	
Mechanical data		
Enclosure material	Thermoplastic, glass fibre-reinforced	
Ambient temperature	-30 °C to +80 °C	
Mechanical service life (up to) ^①	10 x 10 ⁶ switching cycles	
B10d (up to) ^①	20 Mio.	
Switching frequency	≤ 100/min.	
Type of connection	Screw connections	
Conductor cross sections	Single-wire 0.5 – 1.5 mm ² or Stranded wire with ferrule 0.5 – 1.5 mm ²	
Cable entry	1 x M20 x 1.5 ≈ 0.15 kg	
Protection class	IP 65 onforming to EN 60529; DIN VDE 0470 T1	
Standards		
VDE 0660 T100, DIN EN 60947-1, IEC 60947-1		
VDE 0660 T200, DIN EN 60947-5-1, IEC 60947-5-1		

^① Depending on switching system. See Table on Pages 70 – 73.

IW (Form B)



RIW (Form C)



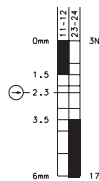
Switching operation

1 NC / 1 NO contact

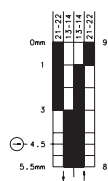
Slow-action

Snap-action

6081102001
ENK-U1Z IW



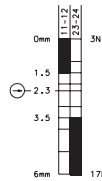
6081152007
ENK-SU1Z IW



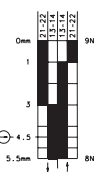
Slow-action

Snap-action

6081117002
ENK-U1Z RIW

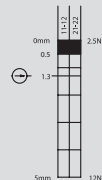


6081167008
ENK-SU1Z RIW



2 NC contacts

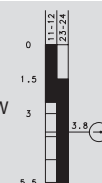
6081817281
ENK-A2Z RIW



2 NO contacts

1 NC / 1 NO contact Overlapping

6081317307
ENK-UV1Z RIW



Approvals



Replacement actuator: 3918020660

Replacement actuator: 3918170661

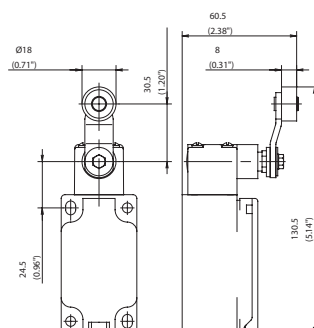
Special features / variants (on request)

- Available with black enclosure and following contacts:
3 NC contacts

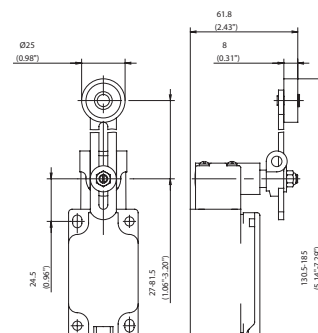
Special features / variants (on request)

- Available for high temperature range and following contacts:
3 NC contacts

AHS-V (Form A)



AV



Switching operation

1 NC / 1 NO contact

Slow-action

Snap-action

6081135003
ENK-U1Z AHS-V

6081185009
ENK-SU1Z
AHS-V

Slow-action

Snap-action

6081136012
ENK-U1 AV

6081186018
ENK-SU1 AV

2 NC contacts

6081835323
ENK-A2Z AHS-V

2 NO contacts

1 NC / 1 NO contact
Overlapping

6081335006
ENK-UV1Z
AHS-V

Approvals



Replacement actuator: 3918350737

Replacement actuator: 3918360738

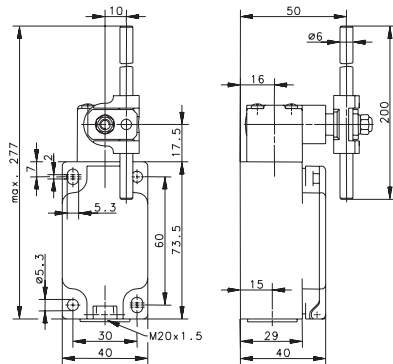
Special features / variants (on request)

- Available with black enclosure
- With 50 mm diameter rubber roller and following contacts:
3 NC contacts

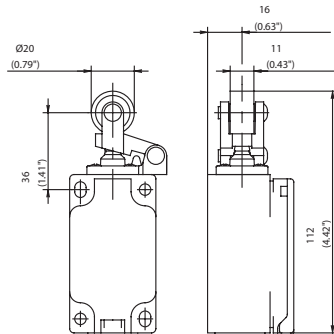
Special features / variants (on request)

- Available with different lever lengths and roller diameters
- With 50 mm diameter rubber roller
- With roller over switch

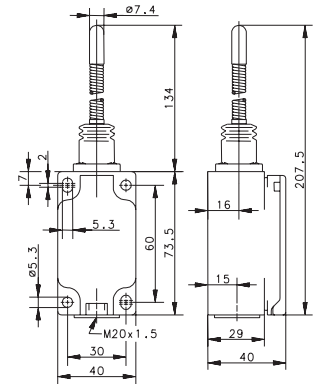
AD (Form D)



HW RO20



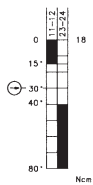
FF



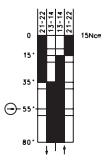
Slow-action

Snap-action

6081137011
ENK-U1 AD



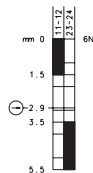
6081187017
ENK-SU1 AD



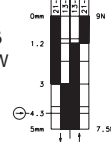
Slow-action

Snap-action

6081121095
ENK-U1Z HW
RO20



6081171096
ENK-SU1Z HW
RO20



Slow-action

Snap-action

6081190045
ENK-SU1 FF



Replacement actuator: 3918370739



Replacement actuator: 3918200906



Replacement actuator: 3918400662

Special features / variants

(on request)

- Available with various actuator directions and actuator lengths

Special features / variants

(on request)

- Available with black enclosure and various roller diameters

Special features / variants

(on request)