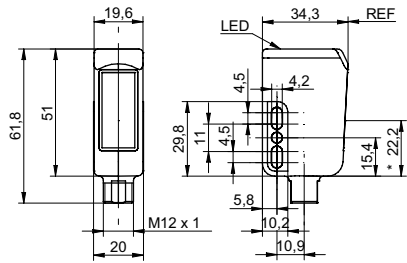


Retro-reflective sensors

FPDR 14N5101/S14

dimension drawing



* emitter axis

general data

type	retro-reflective sensor
special type	Washdown design
light source	pulsed red LED
actual range S_b	3 m
nominal range S_n	3,5 m
polarization filter	yes
alignment / soiled lens indicator	flashing light indicator
light indicator	LED yellow
sensitivity adjustment	no
wave length	660 nm
suppression of reciprocal influence	yes
approvals/certificates	Ecolab

electrical data

response time / release time	< 1 ms
voltage supply range +Vs	10 ... 30 VDC
current consumption max. (no load)	25 mA
current consumption typ.	20 mA
voltage drop V_d	< 1,8 VDC
output function	light / dark operate
output circuit	NPN
output current	< 100 mA
short circuit protection	yes
reverse polarity protection	yes

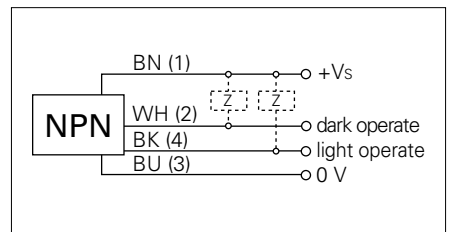
mechanical data

width / diameter	19,6 mm
height / length	51 mm
depth	34,3 mm
type	rectangular
housing material	stainless steel 1.4404 (V4A)
front (optics)	PMMA
connection types	connector M12

photo



connection diagram



proTect⁺



• Sensor FDA compliant and Ecolab approved

Retro-reflective sensors**FPDR 14N5101/S14****ambient conditions**

operating temperature	-30 ... +60 °C
protection class	IP 68/69K & proTect+
storage temperature	-30 ... +70 °C