

# GQ16

## Metal Push Button



### Part-number Description

GQ16	★	□	◇	◆	△	▲	◎
<b>Code of series</b>	<b>The Front shape</b>	<b>Contact structure</b>	<b>Lamp type</b>	<b>Connet type</b>	<b>Lamp color and colorized button</b>	<b>Lamp voltage</b>	<b>Crust material</b>
	<b>B</b> Domed <b>F</b> Flat Round <b>H</b> High Round <b>PF</b> Super Flat Head + Flat Button <b>PH</b> Super Flat Head + High Flat Button	10 1NO 01 1NC  <b>1NC can be made to order for some products</b>  <b>No letter means signal lamp</b>	<b>D</b> Dot <b>E</b> Ring	<b>J</b> Pin terminal <b>L</b> Long Pin Terminal  <b>No letter means screw terminal</b>	<b>R</b> Red <b>G</b> Green <b>Y</b> Yellow <b>O</b> Orange <b>B</b> Blue <b>W</b> White <b>N</b> Black	AC/DC 6V AC/DC 12V AC/DC 24V AC/DC 36V  <b>Note: Other voltage can be made to order</b>	<b>N</b> Nickel-plated Brass <b>S</b> Stainless steel <b>A</b> Stainless steel <b>PC</b> Engineering plastic <b>Cr</b> Chrome-plated (made to order)

**Note:** Pls read the catalogue carefully, and choose the right part-number according to the sign.

### Specifications

<b>Operating Temperature</b>	-25°C~+55°C(no freezing) keep the air flowing around illuminated pushbutton
<b>Operating Humidity</b>	45~85%RH(no condensation)
<b>Contact Resistance</b>	≤50mΩ
<b>Insulation Resistance</b>	≥1000MΩ
<b>Dielectric Strength</b>	2000V,A C50Hz,5 seconds
<b>Vibration Resistance</b>	50Hz,Amplitude 1.2mm
<b>Shock Resistance</b>	> 10g
<b>Solder Heat Resistance</b>	320°C(or 30W soldering iron) no more than 2 seconds)

### Standard and Certification

Standard	Certification Mark	Certificate Authority /Certification Number
EN61058-1:2002+A2:2008	CE	VOV/VT11018807
EN60947-1:2004	CE	CTS/CTS070706-01006-E

### Switching Operation

Type	X	Y
<b>Sign</b>		
<b>Diagram</b>		

Note: Using two terminals, double-break and slow-motion contact

**Y type NC switch can be made to order for individual product, pls check the product description.**

### Lamp Ratings

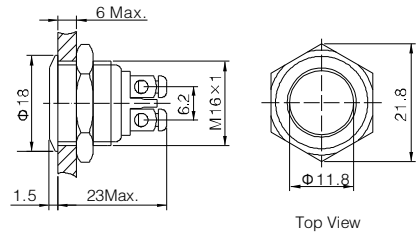
<b>Lamp Type</b>	LED lamp(AC/DC)
<b>Led Color</b>	<b>R</b> <b>G</b> <b>Y</b> <b>O</b> <b>B</b> <b>W</b>
<b>Life</b>	40000 hours ( Reference )
<b>Rated Voltage</b>	AC/DC6V,AC/DC12V,AC/DC24V,AC/DC36V
<b>Rated Current</b>	About 15mA
<b>DroppingWay</b>	External resistance
<b>Lamp Circuit Diagram</b>	Using AC/DCLed lamp, the terminals have no difference of anode and cathode. 

**Note:** DC LED and other voltage can be made to order.



GQ16F-10/O

- ◎ Φ 16mm Diameter
- ◎ Switch Rating:2A/36VDC
- ◎ Contact Configuration: 1NO(1NC can be made to order)
- ◎ Operation Type: Momentary
- ◎ The Front Shape: Flat Round
- ◎ The Crust Material(◎): Stainless steel(S)/ Nickel plated Brass(N)/Aluminium alloy black anodized(A)
- ◎ IP Degree: IP65,IK08

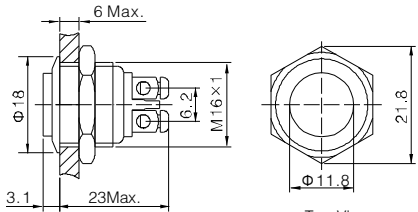


Top View



GQ16H-10/O

- ◎ Φ 16mm Diameter
- ◎ Switch Rating:2A/36VDC
- ◎ Contact Configuration: 1NO(1NC can be made to order)
- ◎ Operation Type: Momentary
- ◎ The Front Shape: High Round
- ◎ The Crust Material(◎): Stainless steel(S)/ Nickel plated Brass(N)/Aluminium alloy black anodized(A)
- ◎ IP Degree: IP65,IK08

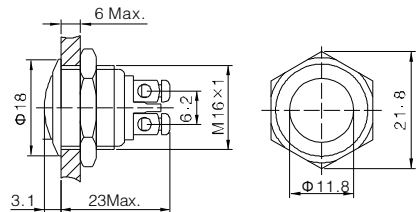


Top View



GQ16B-10/O

- ◎ Φ 16mm Diameter
- ◎ Switch Rating:2A/36VDC
- ◎ Contact Configuration: 1NO(1NC can be made to order)
- ◎ Operation Type: Momentary
- ◎ The Front Shape: Domed
- ◎ The Crust Material(◎): Stainless steel(S)/ Nickel plated Brass(N)/Aluminium alloy black anodized(A)
- ◎ IP Degree: IP65,IK08

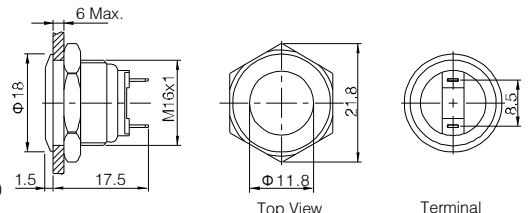


Top View



GQ16F-10/J/O

- ◎ Φ 16mm Diameter
- ◎ Switch Rating:2A/36VDC
- ◎ Contact Configuration: 1NO
- ◎ Operation Type: Momentary
- ◎ The Front Shape: Flat Round
- ◎ The Crust Material(◎): Stainless steel(S)/ Nickel plated Brass(N)/Aluminium alloy black anodized(A)
- ◎ IP Degree: IP65,IK08

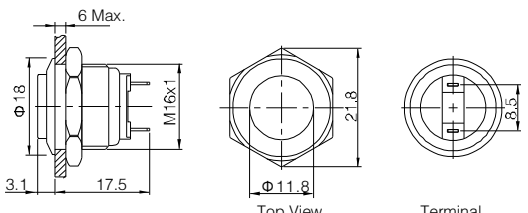


Terminal Arrangement



GQ16H-10/J/O

- ◎ Φ 16mm Diameter
- ◎ Switch Rating:2A/36VDC
- ◎ Contact Configuration: 1NO
- ◎ Operation Type: Momentary
- ◎ The Front Shape: High Round
- ◎ The Crust Material(◎): Stainless steel(S)/ Nickel plated Brass(N)/Aluminium alloy black anodized(A)
- ◎ IP Degree: IP65,IK08

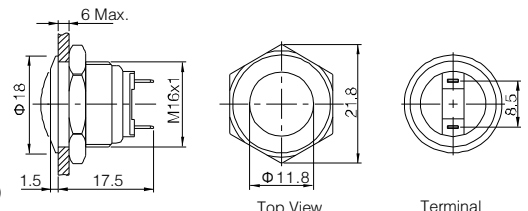


Terminal Arrangement



GQ16B-10/J/O

- ◎ Φ 16mm Diameter
- ◎ Switch Rating:2A/36VDC
- ◎ Contact Configuration: 1NO
- ◎ Operation Type: Momentary
- ◎ The Front Shape: Domed
- ◎ The Crust Material(◎): Stainless steel(S)/ Nickel plated Brass(N)/Aluminium alloy black anodized(A)
- ◎ IP Degree: IP65,IK08

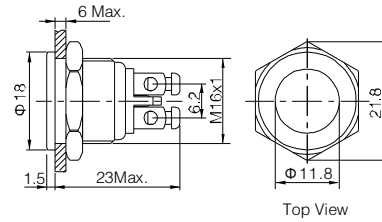


Terminal Arrangement

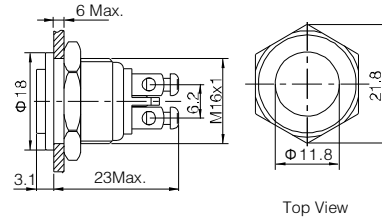
GQ16F-10/◎ GQ16H-10/◎ GQ16B-10/◎		Material	Button	Stainless steel/ Aluminium alloy black anodized	GQ16F-10/J/◎ GQ16H-10/J/◎ GQ16B-10/J/◎		Material	Button	Stainless steel/ Aluminium alloy black anodized
Terminal Type	Screw Terminal <th>Body</th> <td>Stainless steel/Nickel plated Brass /Aluminium alloy black anodized</td> <th>Terminal Type</th> <td>Pin Terminal(2×0.5mm)</td> <th>Body</th> <td>Stainless steel/Nickel plated Brass /Aluminium alloy black anodized</td>		Body	Stainless steel/Nickel plated Brass /Aluminium alloy black anodized	Terminal Type	Pin Terminal(2×0.5mm)		Body	Stainless steel/Nickel plated Brass /Aluminium alloy black anodized
Switching	X(double-break slow-motion contact) <th>Base</th> <td>PBT</td> <th>Operation Pressure</th> <td>About 4N <th>Base</th> <td>PBT</td> <th>Operation Pressure</th> <td>About 4N</td> </td>		Base	PBT	Operation Pressure	About 4N <th>Base</th> <td>PBT</td> <th>Operation Pressure</th> <td>About 4N</td>		Base	PBT
Panel Thickness	1 ~ 6mm <th>Operation Pressure</th> <td>About 4N <th>Operation Travel</th> <td>About 2.5mm <th>Switching</th> <td>X(double-break slow-motion contact) <th>Operation Travel</th> <td>About 2.5mm </td></td></td></td>	Operation Pressure	About 4N <th>Operation Travel</th> <td>About 2.5mm <th>Switching</th> <td>X(double-break slow-motion contact) <th>Operation Travel</th> <td>About 2.5mm </td></td></td>	Operation Travel	About 2.5mm <th>Switching</th> <td>X(double-break slow-motion contact) <th>Operation Travel</th> <td>About 2.5mm </td></td>	Switching	X(double-break slow-motion contact) <th>Operation Travel</th> <td>About 2.5mm </td>	Operation Travel	About 2.5mm
Torque	0.6Nm <th>Panel Thickness</th> <td>1 ~ 6mm <th>Torque</th> <td>0.6Nm <th>Mechanical Life</th> <td>1,000,000 cycles <th>Electrical Life</th> <td>200,000 cycles</td> </td></td></td>	Panel Thickness	1 ~ 6mm <th>Torque</th> <td>0.6Nm <th>Mechanical Life</th> <td>1,000,000 cycles <th>Electrical Life</th> <td>200,000 cycles</td> </td></td>	Torque	0.6Nm <th>Mechanical Life</th> <td>1,000,000 cycles <th>Electrical Life</th> <td>200,000 cycles</td> </td>	Mechanical Life	1,000,000 cycles <th>Electrical Life</th> <td>200,000 cycles</td>	Electrical Life	200,000 cycles
Mechanical Life	1,000,000 cycles	Mechanical Life	1,000,000 cycles	Electrical Life	200,000 cycles	RoHS	Made to order	RoHS	Made to order



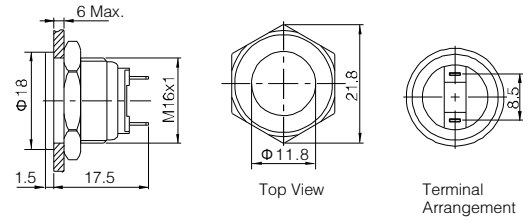
- ◎  $\Phi$  16mm Diameter
- ◎ Switch Rating:2A/36VDC
- ◎ Contact Configuration: 1NO(1NC can be made to order)
- ◎ Operation Type: Momentary
- ◎ The Front Shape: Flat Round
- ◎ The Crust Material(◎): Stainless steel(S)/ Nickel plated Brass(N)
- ◎ IP Degree: IP65,IK08



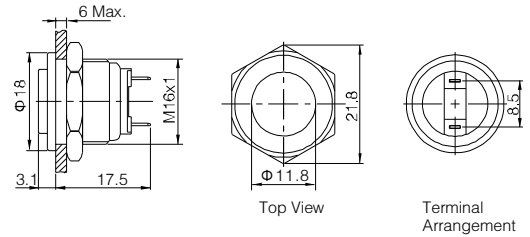
- ◎  $\Phi$  16mm Diameter
- ◎ Switch Rating:2A/36VDC
- ◎ Contact Configuration: 1NO(1NC can be made to order)
- ◎ Operation Type: Momentary
- ◎ The Front Shape: High Round
- ◎ The Crust Material(◎): Stainless steel(S)/ Nickel plated Brass(N)
- ◎ IP Degree: IP65,IK08



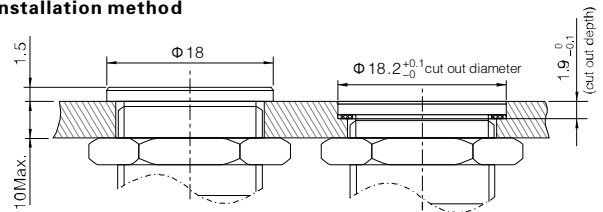
- ◎  $\Phi$  16mm Diameter
- ◎ Switch Rating:2A/36VDC
- ◎ Contact Configuration: 1NO(1NC can be made to order)
- ◎ Operation Type: Momentary
- ◎ The Front Shape: Flat Round
- ◎ The Crust Material(◎): Stainless steel(S)/ Nickel plated Brass(N)
- ◎ IP Degree: IP65,IK08



- ◎  $\Phi$  16mm Diameter
- ◎ Switch Rating:2A/36VDC
- ◎ Contact Configuration: 1NO(1NC can be made to order)
- ◎ Operation Type: Momentary
- ◎ The Front Shape: High Round
- ◎ The Crust Material(◎): Stainless steel(S)/ Nickel plated Brass(N)
- ◎ IP Degree: IP65,IK08



**GQ16 super flat anti-vandal metal push button installation method**

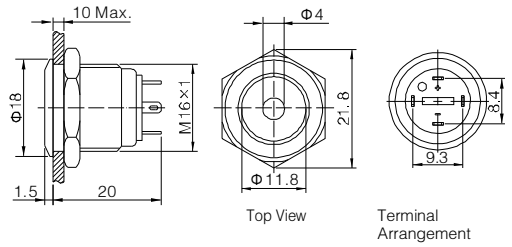


GQ16PF-10/◎ GQ16PH-10/◎		Material	Button	Stainless steel	GQ16PF-10/J/◎ GQ16PH-10/J/◎		Material	Button	Stainless steel/Nickel plated Brass
			Body	Stainless steel/Nickel plated Brass				Body	Stainless steel/Nickel plated Brass
			Base	PBT				Base	PBT
Terminal Type	Screw Terminal	Operation Pressure	About 4N	Terminal Type	Pin Terminal(2×0.5mm)	Operation Pressure	About 4N		
Switching	X(double-break slow-motion contact)	Operation Travel	About 2.5mm	Switching	X(double-break slow-motion contact)	Operation Travel	About 2.5mm		
Panel Thickness	1 ~ 6mm			Panel Thickness	1 ~ 6mm				
Torque	0.6Nm			Torque	5 ~ 14Nm				
Mechanical Life	1,000,000 cycles			Mechanical Life	1,000,000 cycles				
Electrical Life	200,000 cycles	<b>RoHS</b>	Made to order	Electrical Life	200,000 cycles	<b>RoHS</b>	Made to order		



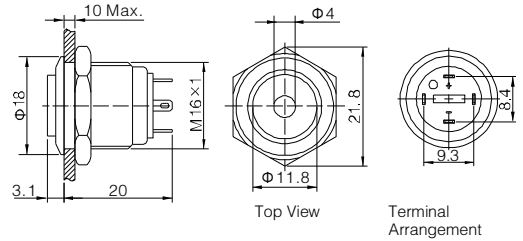
GQ16F-10D/J/Δ/▲/○

- ⊙ For signal lamp, part number is: GQ16F-D/J/Δ/▲/○
- ⊙ Φ 16mm Diameter
- ⊙ Switch Rating: 2A/36VDC
- ⊙ Contact Configuration: 1NO
- ⊙ Operation Type: Momentary
- ⊙ LED Color(Δ): **R G Y O B W**
- ⊙ LED Voltage(▲): 6V/12V/24V/36V(need external resistance)
- ⊙ The Crust Material(○): Stainless steel(S)/ Aluminium alloy black anodized(A)
- ⊙ IP Degree: IP65, IK08



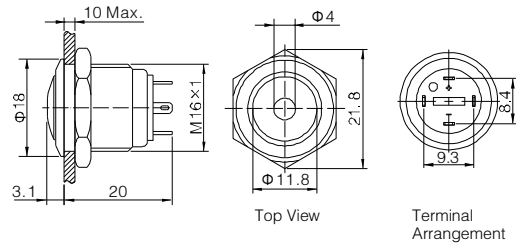
GQ16H-10D/J/Δ/▲/○

- ⊙ For signal lamp, part number is: GQ16H-D/J/Δ/▲/○
- ⊙ Φ 16mm Diameter
- ⊙ Switch Rating: 2A/36VDC
- ⊙ Contact Configuration: 1NO
- ⊙ Operation Type: Momentary
- ⊙ LED Color(Δ): **R G Y O B W**
- ⊙ LED Voltage(▲): 6V/12V/24V/36V(need external resistance)
- ⊙ The Crust Material(○): Stainless steel(S)/ Aluminium alloy black anodized(A)
- ⊙ IP Degree: IP65, IK08



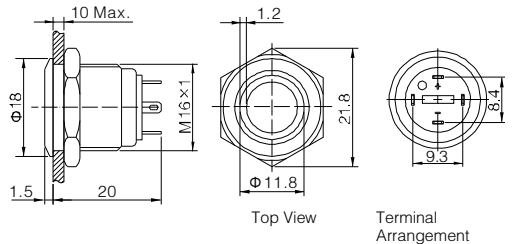
GQ16B-10D/J/Δ/▲/○

- ⊙ For signal lamp, part number is: GQ16B-D/J/Δ/▲/○
- ⊙ Φ 16mm Diameter
- ⊙ Switch Rating: 2A/36VDC
- ⊙ Contact Configuration: 1NO
- ⊙ Operation Type: Momentary
- ⊙ LED Color(Δ): **R G Y O B W**
- ⊙ LED Voltage(▲): 6V/12V/24V/36V(need external resistance)
- ⊙ The Crust Material(○): Stainless steel(S)/ Aluminium alloy black anodized(A)
- ⊙ IP Degree: IP65, IK08



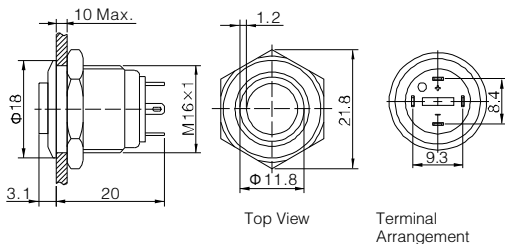
GQ16F-10E/J/Δ/▲/○

- ⊙ For signal lamp, part number is: GQ16F-E/J/Δ/▲/○
- ⊙ Φ 16mm Diameter
- ⊙ Switch Rating: 2A/36VDC
- ⊙ Contact Configuration: 1NO
- ⊙ Operation Type: Momentary
- ⊙ LED Color(Δ): **R G Y O B W**
- ⊙ LED Voltage(▲): 6V/12V/24V/36V(need external resistance)
- ⊙ The Crust Material(○): Stainless steel(S)/ Aluminium alloy black anodized(A)
- ⊙ IP Degree: IP65, IK08



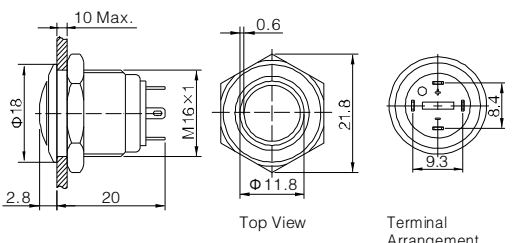
GQ16H-10E/J/Δ/▲/○

- ⊙ For signal lamp, part number is: GQ16H-E/J/Δ/▲/○
- ⊙ Φ 16mm Diameter
- ⊙ Switch Rating: 2A/36VDC
- ⊙ Contact Configuration: 1NO
- ⊙ Operation Type: Momentary
- ⊙ LED Color(Δ): **R G Y O B W**
- ⊙ LED Voltage(▲): 6V/12V/24V/36V(need external resistance)
- ⊙ The Crust Material(○): Stainless steel(S)/ Aluminium alloy black anodized(A)
- ⊙ IP Degree: IP65, IK08



GQ16B-10E/J/Δ/▲/○

- ⊙ For signal lamp, part number is: GQ16B-E/J/Δ/▲/○
- ⊙ Φ 16mm Diameter
- ⊙ Switch Rating: 2A/36VDC
- ⊙ Contact Configuration: 1NO
- ⊙ Operation Type: Momentary
- ⊙ LED Color(Δ): **R G Y O B W**
- ⊙ LED Voltage(▲): 6V/12V/24V/36V(need external resistance)
- ⊙ The Crust Material(○): Stainless steel(S)/ Aluminium alloy black anodized(A)
- ⊙ IP Degree: IP65, IK08



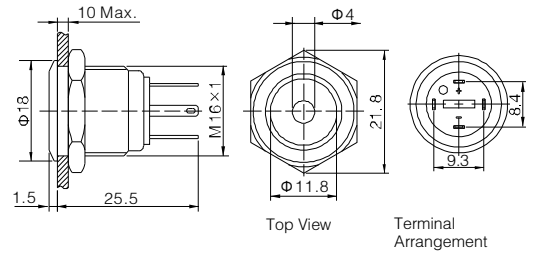
<b>GQ16F-10D/J/Δ/▲/○</b> <b>GQ16H-10D/J/Δ/▲/○</b> <b>GQ16B-10D/J/Δ/▲/○</b>		<b>GQ16F-10E/J/Δ/▲/○</b> <b>GQ16H-10E/J/Δ/▲/○</b> <b>GQ16B-10E/J/Δ/▲/○</b>	
<b>Terminal Type</b>	Pin Terminal(2x0.5mm)	<b>Material</b>	<b>Button</b>
<b>Switching</b>	x(double-break slow-motion contact)		Stainless steel/ Aluminium alloy black anodized
<b>Panel Thickness</b>	1~6mm		<b>Body</b>
<b>Torque</b>	0.6Nm		Stainless steel/ Aluminium alloy black anodized
<b>Mechanical Life</b>	1,000,000 cycles		<b>Base</b>
<b>Electrical Life</b>	200,000 cycles		PBT
		<b>Made to order</b>	About 4N
		<b>Operation Travel</b>	About 2.5mm
		<b>RoHS</b>	Made to order

<b>Lamp Ratings</b>	<b>Lamp Type</b>	dot illuminated/ring illuminated(LED)				
	<b>Led Color</b>	<b>R Y G</b>	<b>G B W</b>			
	<b>Rated Voltage<sub>Ue</sub></b>	AC/DC 1.8V		AC/DC 2.8V		
	<b>Rated Current</b>	15mA				
	<b>Life</b>	40000 hours				
<b>Current-Limiting Resistance Configuration Table</b>	<b>Operating Voltage(U)</b>	6V	12V	24V	36V	
	<b>Current-Limiting Resistance (R)</b>	<b>R Y G</b>	270 Ω, 1/4W	820 Ω, 1/2W	1.5K Ω, 1W	2.7K Ω, 1W
		<b>G B W</b>	220 Ω, 1/4W	680 Ω, 1/2W	1.5K Ω, 1W	2.7K Ω, 1W



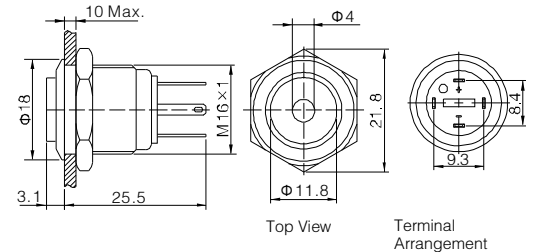
GQ16F-10D/JL/Δ/▲/◎

- ◎ For signal lamp, part number is: GQ16F-D/JL/Δ/▲/◎
- ◎  $\Phi$  16mm Diameter
- ◎ Switch Rating: 2A/36VDC
- ◎ Contact Configuration: 1NO
- ◎ Operation Type: Momentary
- ◎ LED Color(Δ): **R G Y O B W**
- ◎ LED Voltage(▲): 6V/12V/24V/36V(need external resistance)
- ◎ The Crust Material(◎): Stainless steel(S)/ Aluminium alloy black anodized(A)
- ◎ IP Degree: IP65, IK08



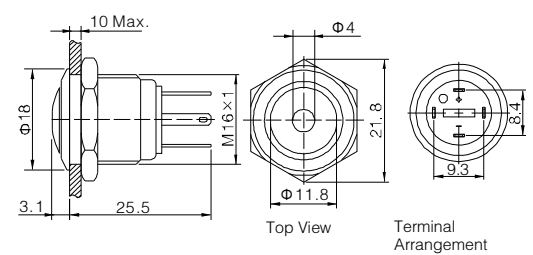
GQ16H-10D/JL/Δ/▲/◎

- ◎ For signal lamp, part number is: GQ16H-D/JL/Δ/▲/◎
- ◎  $\Phi$  16mm Diameter
- ◎ Switch Rating: 2A/36VDC
- ◎ Contact Configuration: 1NO
- ◎ Operation Type: Momentary
- ◎ LED Color(Δ): **R G Y O B W**
- ◎ LED Voltage(▲): 6V/12V/24V/36V(need external resistance)
- ◎ The Crust Material(◎): Stainless steel(S)/ Aluminium alloy black anodized(A)
- ◎ IP Degree: IP65, IK08



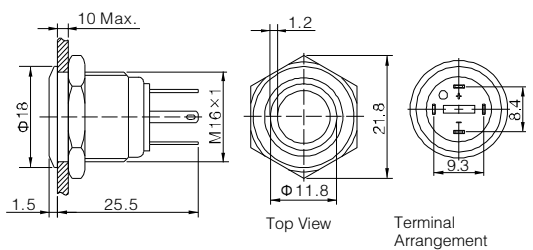
GQ16B-10D/JL/Δ/▲/◎

- ◎ For signal lamp, part number is: GQ16B-D/JL/Δ/▲/◎
- ◎  $\Phi$  16mm Diameter
- ◎ Switch Rating: 2A/36VDC
- ◎ Contact Configuration: 1NO
- ◎ Operation Type: Momentary
- ◎ LED Color(Δ): **R G Y O B W**
- ◎ LED Voltage(▲): 6V/12V/24V/36V(need external resistance)
- ◎ The Crust Material(◎): Stainless steel(S)/ Aluminium alloy black anodized(A)
- ◎ IP Degree: IP65, IK08



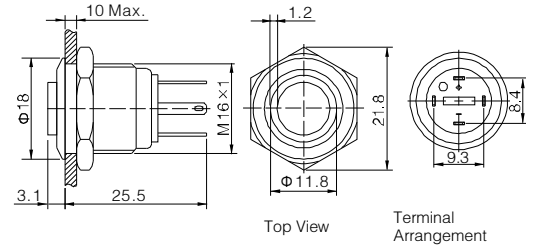
GQ16F-10E/JL/Δ/▲/◎

- ◎ For signal lamp, part number is: GQ16F-E/JL/Δ/▲/◎
- ◎  $\Phi$  16mm Diameter
- ◎ Switch Rating: 2A/36VDC
- ◎ Contact Configuration: 1NO
- ◎ Operation Type: Momentary
- ◎ LED Color(Δ): **R G Y O B W**
- ◎ LED Voltage(▲): 6V/12V/24V/36V(need external resistance)
- ◎ The Crust Material(◎): Stainless steel(S)/ Aluminium alloy black anodized(A)
- ◎ IP Degree: IP65, IK08



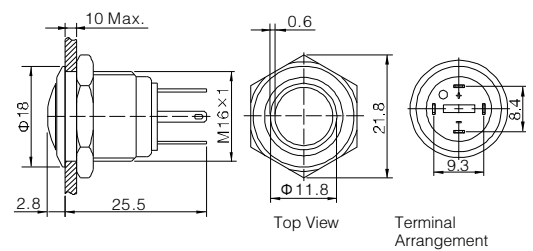
GQ16H-10E/JL/Δ/▲/◎

- ◎ For signal lamp, part number is: GQ16H-E/JL/Δ/▲/◎
- ◎  $\Phi$  16mm Diameter
- ◎ Switch Rating: 2A/36VDC
- ◎ Contact Configuration: 1NO
- ◎ Operation Type: Momentary
- ◎ LED Color(Δ): **R G Y O B W**
- ◎ LED Voltage(▲): 6V/12V/24V/36V(need external resistance)
- ◎ The Crust Material(◎): Stainless steel(S)/ Aluminium alloy black anodized(A)
- ◎ IP Degree: IP65, IK08



GQ16B-10E/JL/Δ/▲/◎

- ◎ For signal lamp, part number is: GQ16B-E/JL/Δ/▲/◎
- ◎  $\Phi$  16mm Diameter
- ◎ Switch Rating: 2A/36VDC
- ◎ Contact Configuration: 1NO
- ◎ Operation Type: Momentary
- ◎ LED Color(Δ): **R G Y O B W**
- ◎ LED Voltage(▲): 6V/12V/24V/36V(need external resistance)
- ◎ The Crust Material(◎): Stainless steel(S)/ Aluminium alloy black anodized(A)
- ◎ IP Degree: IP65, IK08

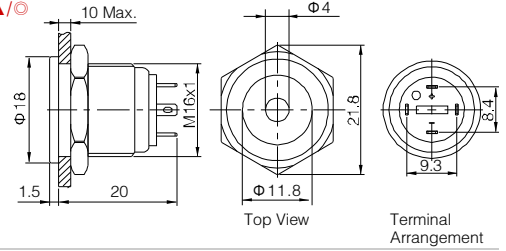


<b>GQ16F-10D/JL/Δ/▲/◎</b> <b>GQ16H-10D/JL/Δ/▲/◎</b> <b>GQ16B-10D/JL/Δ/▲/◎</b>		<b>GQ16F-10E/JL/Δ/▲/◎</b> <b>GQ16H-10E/JL/Δ/▲/◎</b> <b>GQ16B-10E/JL/Δ/▲/◎</b>		
<b>Terminal Type</b>	Pin Terminal(2×0.5mm) x(double-break slow-motion contact)	<b>Material</b>	<b>Button</b>	Stainless steel/ Aluminium alloy black anodized
<b>Switching</b>			<b>Body</b>	Stainless steel/ Aluminium alloy black anodized
<b>Panel Thickness</b>	1~6mm		<b>Base</b>	PBT
<b>Torque</b>	0.6Nm	<b>Made to order</b>	About 4N	
<b>Mechanical Life</b>	1,000,000 cycles	<b>Operation Travel</b>	About 2.5mm	
<b>Electrical Life</b>	200,000 cycles	<b>RoHS</b>	Made to order	

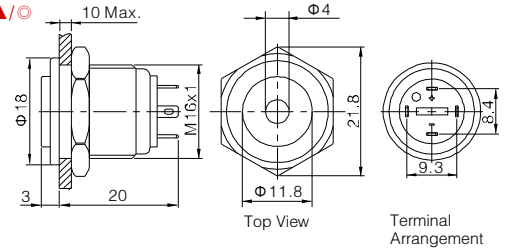
<b>Lamp Ratings</b>	<b>Lamp Type</b>	dot illuminated/ring illuminated(LED)				
	<b>Led Color</b>	<b>R Y G</b>		<b>B W</b>		
	<b>Rated Voltage<sub>Ue</sub></b>	AC/DC 1.8V		AC/DC 2.8V		
	<b>Rated Current</b>	15mA				
	<b>Life</b>	40000 hours				
<b>Current-Limiting Resistance Configuration Table</b>	<b>Operating Voltage(U)</b>	6V	12V	24V	36V	
	<b>Current-Limiting Resistance (R)</b>	<b>R Y G</b>	270Ω, 1/4W	820Ω, 1/2W	1.5KΩ, 1W	2.7KΩ, 1W
		<b>B W</b>	220Ω, 1/4W	680Ω, 1/2W	1.5KΩ, 1W	2.7KΩ, 1W



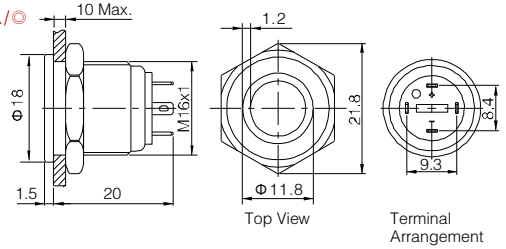
- ☉ If you need indicator, The model number is: **GQ16PF-D/J/Δ/▲/○**
- ☉ Install diameter: Φ 16mm
- ☉ Switch Rating: 2A/36VDC
- ☉ Contact Configuration: 1NO
- ☉ Operation Type: Momentary
- ☉ LED Color (Δ): **R G Y O B W**
- ☉ LED Voltage (▲): 6V/12V/24V/36V (Need outer resistance)
- ☉ The Crust Material (○): Stainless steel (S)/Aluminium alloy (A)
- ☉ IP Degree: IP65, IK08



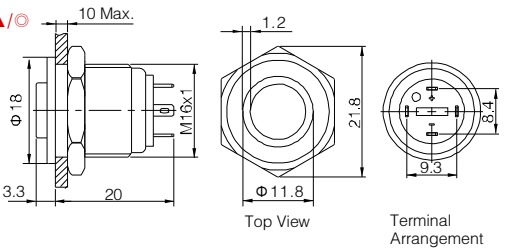
- ☉ If you need indicator, The model number is: **GQ16PH-D/J/Δ/▲/○**
- ☉ Install diameter: Φ 16mm
- ☉ Switch Rating: 2A/36VDC
- ☉ Contact Configuration: 1NO
- ☉ Operation Type: Momentary
- ☉ LED Color (Δ): **R G Y O B W**
- ☉ LED Voltage (▲): 6V/12V/24V/36V (Need outer resistance)
- ☉ The Crust Material (○): Stainless steel (S)/Aluminium alloy (A)
- ☉ IP Degree: IP65, IK08



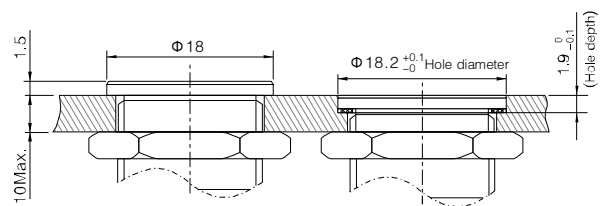
- ☉ If you need indicator, The model number is: **GQ16PF-E/J/Δ/▲/○**
- ☉ Install diameter: Φ 16mm
- ☉ Switch Rating: 2A/36VDC
- ☉ Contact Configuration: 1NO
- ☉ Operation Type: Momentary
- ☉ LED Color (Δ): **R G Y O B W**
- ☉ LED Voltage (▲): 6V/12V/24V/36V (Need outer resistance)
- ☉ The Crust Material (○): Stainless steel (S)/Aluminium alloy (A)
- ☉ IP Degree: IP65, IK08



- ☉ If you need indicator, The model number is: **GQ16PH-E/J/Δ/▲/○**
- ☉ Install diameter: Φ 16mm
- ☉ Switch Rating: 2A/36VDC
- ☉ Contact Configuration: 1NO
- ☉ Operation Type: Momentary
- ☉ LED Color (Δ): **R G Y O B W**
- ☉ LED Voltage (▲): 6V/12V/24V/36V (Need outer resistance)
- ☉ The Crust Material (○): Stainless steel (S)/Aluminium alloy (A)
- ☉ IP Degree: IP65, IK08



**GQ16 super flat type install way:**

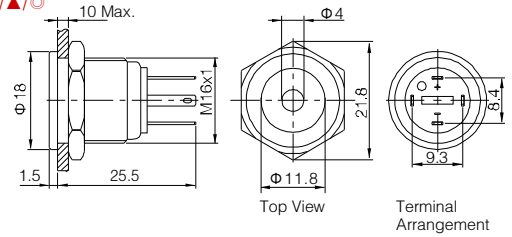


GQ16PF-10D/J/Δ/▲/○		GQ16PF-10E/J/Δ/▲/○		
GQ16PH-10D/J/Δ/▲/○		GQ16PH-10E/J/Δ/▲/○		
<b>Terminal Type</b>	Pin Terminal (2 x 0.5mm)	<b>Material</b>	<b>Button</b>	Stainless Steel/Aluminium alloy
<b>Switching</b>	x(double-break slow-motion contact)		<b>Body</b>	Stainless Steel/Aluminium alloy
<b>Panel Thickness</b>	1 ~ 6mm		<b>Base</b>	PBT
<b>Torque</b>	0.6Nm	<b>Made to order</b>	About 4N	
<b>Mechanical Life</b>	1,000,000 cycles	<b>Operation Travel</b>	About 2.5mm	
<b>Electrical Life</b>	200,000 cycles	<b>RoHS</b>	Made to order	

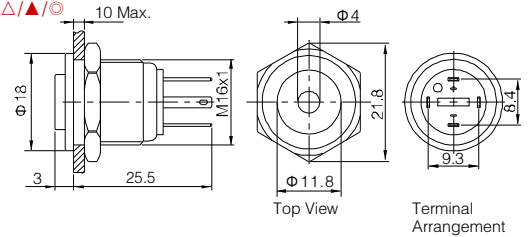
<b>Lamp Ratings</b>	<b>Lamp Type</b>	dot illuminated/ring illuminated(LED)			
	<b>Led Color</b>	<b>R Y G</b>	<b>G B W</b>		
	<b>Rated Voltage Ue</b>	AC/DC 1.8V		AC/DC 2.8V	
	<b>Rated Current</b>	15mA			
<b>Life</b>		40000 hours			
<b>Current-Limiting Resistance Configuration Table</b>	Operating Voltage(U)	6V	12V	24V	36V
	Current-Limiting Resistance (R)	<b>R Y G</b> 270 Ω, 1/4W	820 Ω, 1/2W	1.5K Ω, 1W	2.7K Ω, 1W
		<b>G B W</b> 220 Ω, 1/4W	680 Ω, 1/2W	1.5K Ω, 1W	2.7K Ω, 1W



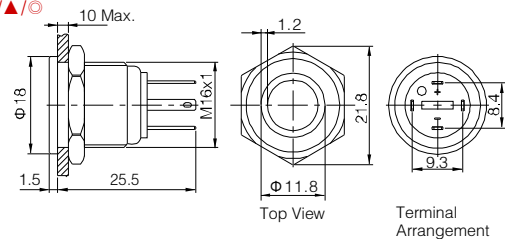
- ☉ If you need indicator, The model number is: GQ16PF-D/JL/Δ/▲/○
- ☉ Install diameter: Φ16mm
- ☉ Switch Rating: 2A/36VDC
- ☉ Contact Configuration: 1NO
- ☉ Operation Type: Momentary
- ☉ LED Color(Δ): **R G Y O B W**
- ☉ LED Voltage(▲): 6V/12V/24V/36V(Need outer resistance)
- ☉ TheCrustMaterial(○): Stainlesssteel(S)/Aluminiumalloy(A)
- ☉ IP Degree: IP65,IK08



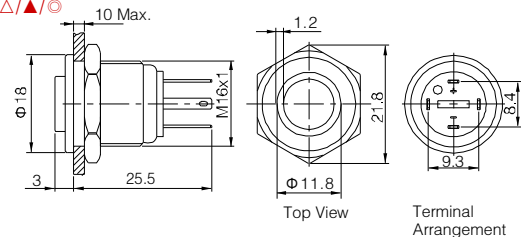
- ☉ If you need indicator, The model number is: GQ16PH-D/JL/Δ/▲/○
- ☉ Install diameter: Φ16mm
- ☉ Switch Rating: 2A/36VDC
- ☉ Contact Configuration: 1NO
- ☉ Operation Type: Momentary
- ☉ LED Color(Δ): **R G Y O B W**
- ☉ LED Voltage(▲): 6V/12V/24V/36V(Need outer resistance)
- ☉ TheCrustMaterial(○): Stainlesssteel(S)/Aluminiumalloy(A)
- ☉ IP Degree: IP65,IK08



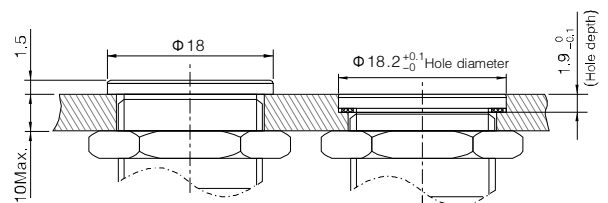
- ☉ If you need indicator, The model number is: GQ16PF-E/JL/Δ/▲/○
- ☉ Install diameter: Φ16mm
- ☉ Switch Rating: 2A/36VDC
- ☉ Contact Configuration: 1NO
- ☉ Operation Type: Momentary
- ☉ LED Color(Δ): **R G Y O B W**
- ☉ LED Voltage(▲): 6V/12V/24V/36V(Need outer resistance)
- ☉ TheCrustMaterial(○): Stainlesssteel(S)/Aluminiumalloy(A)
- ☉ IP Degree: IP65,IK08



- ☉ If you need indicator, The model number is: GQ16PH-E/JL/Δ/▲/○
- ☉ Install diameter: Φ16mm
- ☉ Switch Rating: 2A/36VDC
- ☉ Contact Configuration: 1NO
- ☉ Operation Type: Momentary
- ☉ LED Color(Δ): **R G Y O B W**
- ☉ LED Voltage(▲): 6V/12V/24V/36V(Need outer resistance)
- ☉ TheCrustMaterial(○): Stainlesssteel(S)/Aluminiumalloy(A)
- ☉ IP Degree: IP65,IK08



**GQ16 super flat type install way:**



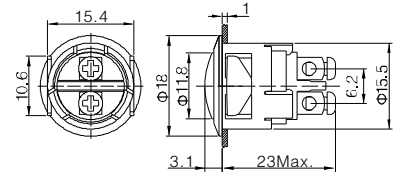
GQ16PF-10D/JL/Δ/▲/○		GQ16PF-10E/JL/Δ/▲/○		
GQ16PH-10D/JL/Δ/▲/○		GQ16PH-10E/JL/Δ/▲/○		
<b>Terminal Type</b>	Pin Terminal(2×0.5mm)	<b>Material</b>	<b>Button</b>	StainlessSteel/Aluminiumalloy
<b>Switching</b>	x(double-break slow-motion contact)		<b>Body</b>	StainlessSteel/Aluminiumalloy
<b>Panel Thickness</b>	1~6mm		<b>Base</b>	PBT
<b>Torque</b>	0.6m	<b>Made to order</b>	About 4N	
<b>Mechanical Life</b>	1,000,000 cycles	<b>Operation Travel</b>	About 2.5mm	
<b>Electrical Life</b>	200,000 cycles	<b>RoHS</b>	Made to order	

<b>Lamp Ratings</b>	<b>Lamp Type</b>	dot illuminated/ring illuminated(LED)			
	<b>Led Color</b>	<b>R Y G</b>	<b>G B W</b>		
	<b>Rated VoltageUe</b>	AC/DC 1.8V	AC/DC 2.8V		
<b>Rated Current</b>	15mA				
<b>Life</b>	40000 hours				
<b>Current-Limiting Resistance Configuration Tble</b>	<b>Operating Voltage(U)</b>	6V	12V	24V	36V
	<b>Current-Limiting Resistance (R)</b>	<b>R Y G</b> 270 Ω, 1/4W	820 Ω, 1/2W	1.5K Ω, 1W	2.7K Ω, 1W
	<b>G B W</b> 220 Ω, 1/4W	680 Ω, 1/2W	1.5K Ω, 1W	2.7K Ω, 1W	



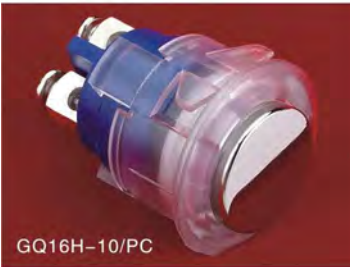
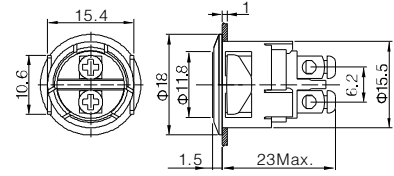
GQ16B-10/PC

- ⊙ Φ 16mm Diameter
- ⊙ Switch Rating:2A/36VDC
- ⊙ Contact Configuration: 1NO (1NC can be made to order)
- ⊙ Operation Type: Momentary
- ⊙ The Front Shape: Domed
- ⊙ The Crust Material(⊙): UV protection PC
- ⊙ IP Degree: IP65,IK02



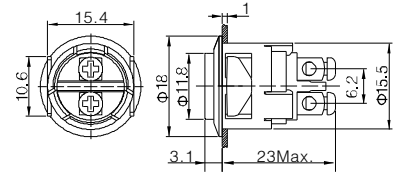
GQ16F-10/PC

- ⊙ Φ 16mm Diameter
- ⊙ Switch Rating:2A/36VDC
- ⊙ Contact Configuration: 1NO (1NC can be made to order)
- ⊙ Operation Type: Momentary
- ⊙ The Front Shape: Flat Round
- ⊙ The Crust Material(⊙): UV protection PC
- ⊙ IP Degree: IP65,IK02



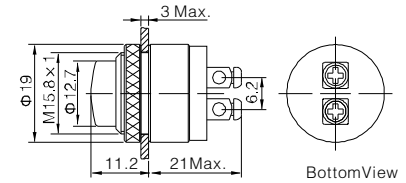
GQ16H-10/PC

- ⊙ Φ 16mm Diameter
- ⊙ Switch Rating:2A/36VDC
- ⊙ Contact Configuration: 1NO (1NC can be made to order)
- ⊙ Operation Type: Momentary
- ⊙ The Front Shape: High Flat Round
- ⊙ The Crust Material(⊙): UV protection PC
- ⊙ IP Degree: IP65,IK02



GQ16M-10

- ⊙ Φ 16mm Diameter
- ⊙ Switch Rating:2A/36VDC
- ⊙ Contact Configuration: 1NO
- ⊙ Operation Type: Momentary
- ⊙ Panel Thickness: 1~3mm
- ⊙ The Crust Material(⊙): Brass(Bronze-coloured)
- ⊙ IP Degree: IP40,IK09



GQ16B-10/PC GQ16F-10/PC GQ16H-10/PC		Material	Button	Stainless steel	GQ16M-10		Material	Button	Brass(Bronze-coloured)
	Body		UV protection PC		Body	Brass(Bronze-coloured)			
	Base		PBT		Base	PBT			
<b>Terminal Type</b>	Screw Terminal	<b>Operation Pressure</b>	About 4N	<b>Terminal Type</b>	Screw Terminal	<b>Operation Pressure</b>	About 8N		
<b>Switching</b>	X(double-break slow-motion contact)	<b>Operation Travel</b>	About 2.5mm	<b>Switching</b>	X(double-break slow-motion contact)	<b>Operation Travel</b>	About 3mm		
<b>Panel Thickness</b>	1mm			<b>Panel Thickness</b>	1 ~ 3mm				
<b>Mechanical Life</b>	1,000,000 cycles			<b>Torque</b>	0.6Nm				
<b>Electrical Life</b>	200,000 cycles			<b>Mechanical Life</b>	1,000,000 cycles				
		<b>RoHS</b>	Made to order	<b>Electrical Life</b>	200,000 cycles	<b>RoHS</b>	Made to order		