



E20-FSS-3D-F-C/O4-110A

The KSSE is a solenoid controlled, multi-key electrical switch for the controlled isolation of low current. This product is used where the controlled isolation of a machine needs to take place, i.e. where a robot has to finish a cycle prior to isolation and where multiple entry points to the protected area are required. The solenoid is continuously rated, and its position is electrically monitored. This type of isolator should be used for short term, off load isolation. The unit is supplied capable of being mounted into an existing panel or for surface mounting within its own IP65 rated lockable steel enclosure. The KSSE is manufactured from either brass or stainless steel making it ideal for use in standard or harsh corrosive environments.

Operation

Castell multi key solenoid controlled switches are typically used for machine isolation in applications where a machine has to finish a cycle prior to isolation.

KSSE multi key solenoid controlled switch, exchange key condition

- ① Isolation Key is free while power is on, solenoid is de-energised. Personnel keys are trapped.
- ② Insert and turn isolation key to switch power off. Once external signal is received (LED illuminates), push the button to de-energize the solenoid and release personnel keys.
- ③ Power is off, isolation key is trapped and personnel keys are free.



1. While the isolation key is free, the power is on. Personnel keys are trapped.
2. By inserting and turning the isolation key in the KSSE, the contact condition changes switching the power off. Once the machine has finished the cycle, a signal is sent to the KSSE to energise the solenoid and an LED illuminates. The personnel keys can now be released by pushing the button. These keys can be taken by personnel to unlock the doors in the machine area.
3. The Isolation Keys stay trapped ensuring power is off until all personnel keys are replaced in the KSSE unit.

Technical Data

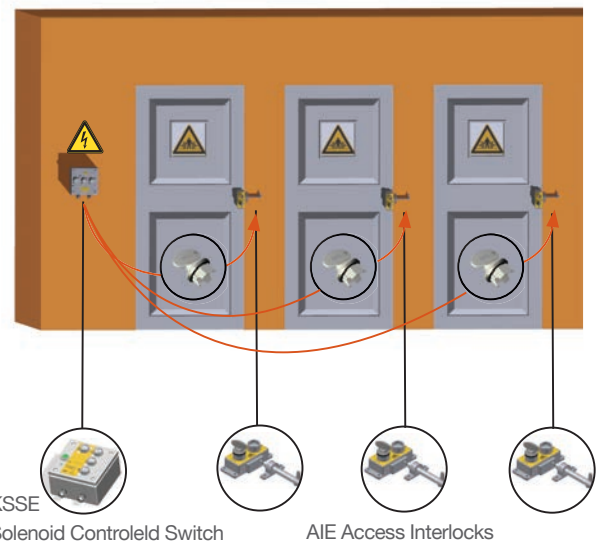
Temperature rating	-25°C ice free to +55°C
Type of mounting	Surface (with enclosure) or panel mount using suitable fasteners (please refer to drawing on page 4 for more details)
Weight	4 kg (2 lock portions unit)
Material	Brass/Stainless steel
Power isolation	20A
Switch approvals	BS,UL,CSA & VDE
MTTF Certification	Available on request

Application

A typical application of KSSE multi key solenoid controlled switch is machine guarding. It is usually used in combination with an access interlock such as the Salus for part body access or an AIE access interlock with an exchange key for full body access control.

The KSS breaks the machine safety circuit, ensuring a machine is shut down once the isolation key is inserted and turned into the unit. Once the machine has completed the cycle, an external signal is received by the solenoid, which is indicated by an illuminated LED. Activating the green button on the KSSE will enable the personnel keys to be turned and removed ensuring the power is locked out. The keys can then be taken to the AIE double key access interlocks to enable access to the machine.

The machine cannot be restarted until all doors are closed, and all personnel keys returned to the KSSE multi key solenoid controlled switch.



EC-Declaration

We, the manufacturers, declare that the components, detailed herein and placed on the market, comply with all the essential health and safety requirements applying to them.

Empowered signatory:

Mr T.C. Whelan
Managing Director

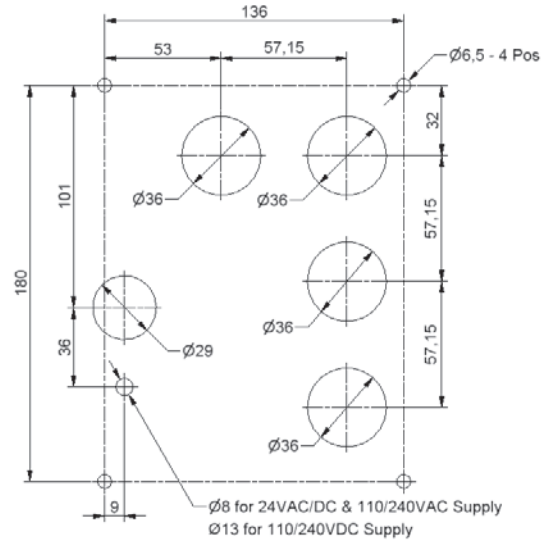
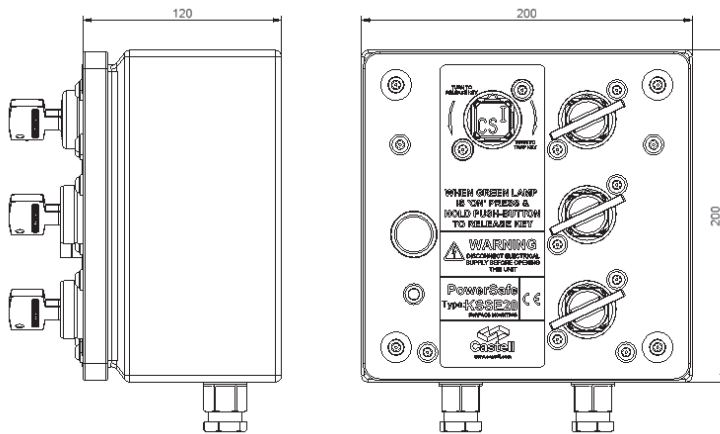


Drawing

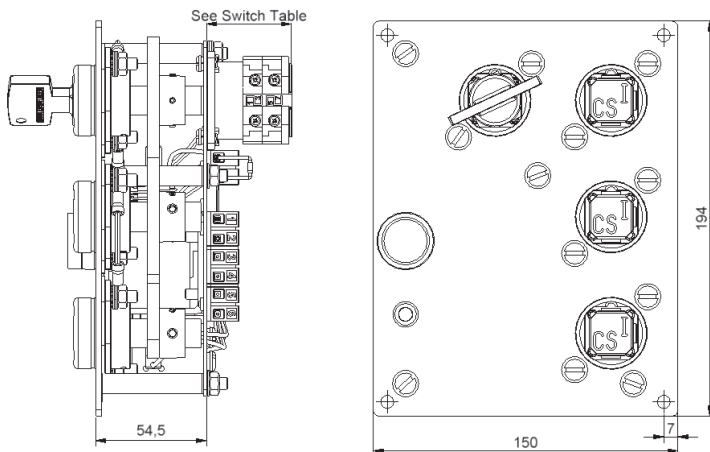
Dimensions:
in mm

Note: For safe mounting, use security screws

KSSE



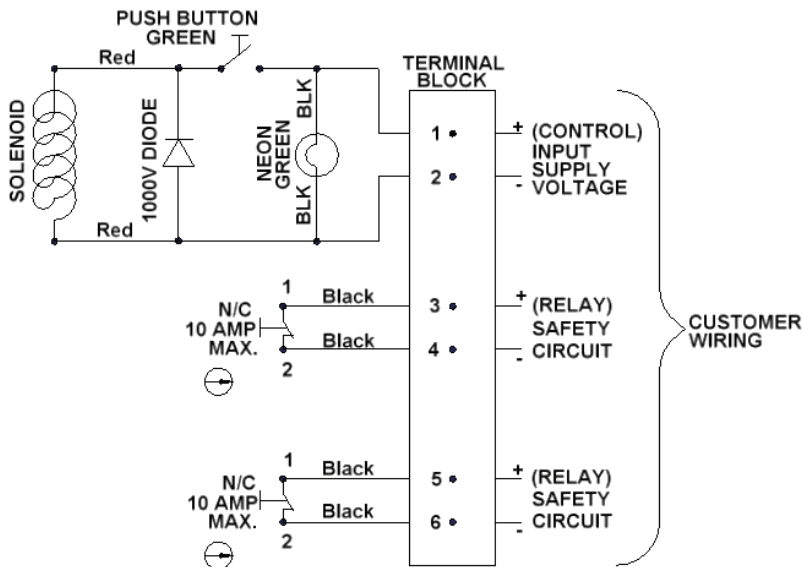
Panel Cut-Out Details



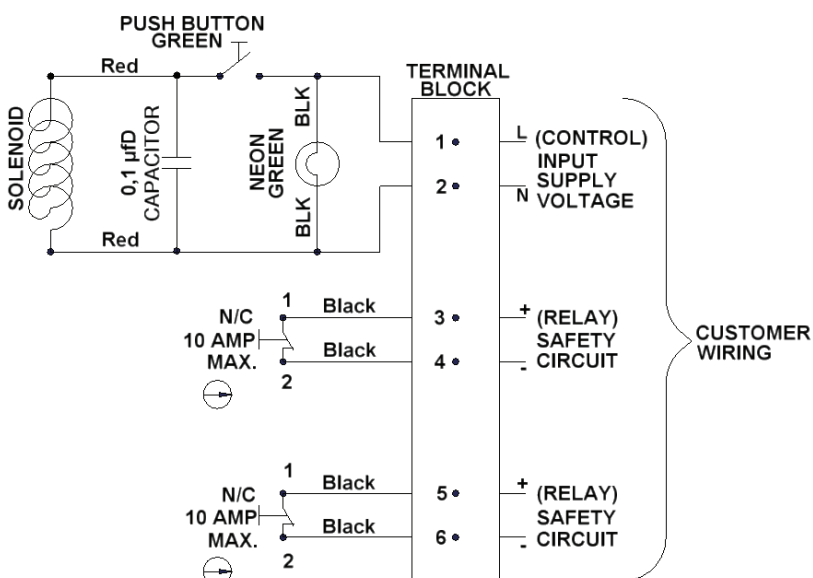
See Switch Table

Wiring Diagram

KSSE, Wiring Diagram DC



KSSE, Wiring Diagram AC



While every effort has been made to ensure the accuracy of the information provided, no liability can be taken for any errors or omission. Castell Safety International Limited reserves the right to alter specifications and introduce improvements without prior notice.