

ROCKER SWITCH MR3 SERIES



RATING

- 10A 125/250VAC (UL, CUL)
- 13A 125VAC, 10A 250VAC, 1/2HP 125/250 VAC (CSA)
- 10(4)A-250VAC T85 (FIMKO ENEC)
- Initial contact resistance: 20m Ohms max
- Insulation resistance: 100M Ohms min. at 500VDC
- Dielectric strength: 1000 VAC (UL), 3000VAC (Fimko) 1min
- Electrical life: 6000 (UL); 10000 (Fimko) cycles

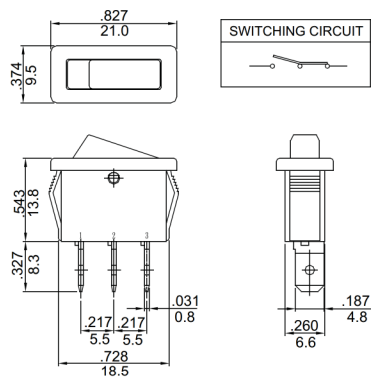
FEATURES

- Safety approved internationally by UL, CUL & CSA in North America, FIMKO & ENEC in Europe.
- SPST, SPDT, DPST, DPDT
- Standard 12.9 x 19.2mm and half body 6.8 x 19mm snap-in cutout size
- Quick-connect and solder terminals
- Waterproof cover boot as optional accessory

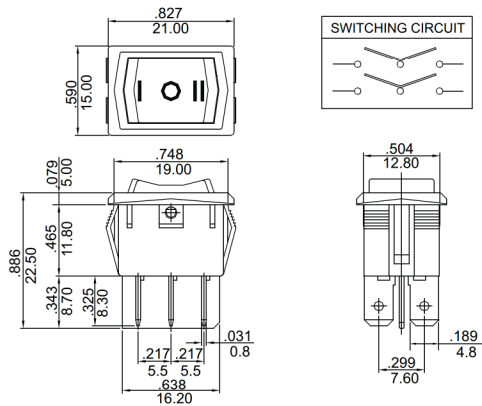
MR3	—	2	3	0	—	C	2	—	B	B	X
SERIES SYMBOL		POLE	FUNCTION	TERMINAL TYPE		ACTUATOR TYPE	MARKING TYPE		BASE COLOR	ACTUATOR COLOR	SUFFIXES
MR3 SERIES		1 SINGLE POLE 2 DOUBLE POLE H HALF BODY SINGLE POLE	1 ON-OFF 2 ON-ON 3 ON-OFF-ON	0 QUICK CONNECT 1 SOLDER TERMINAL		C CURVE	1 HI LO 2 NO MARKING 3 ON OFF 4 ○ 5 ○ —		B BLACK W WHITE A GRAY	B BLACK A GRAY W WHITE R RED	BLANK NUMBER OR LETTERS

Note:

1. The products options may be too many to be listed fully above, kindly consult our sales directly for more information.
2. Suffixes (X): Custom code



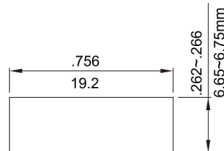
MR3-H20-C2-XXX



MR3-230-C6-XXX

PANEL CUT-OUT

Snap-in mounting



PANEL CUT-OUT

Snap-in mounting

