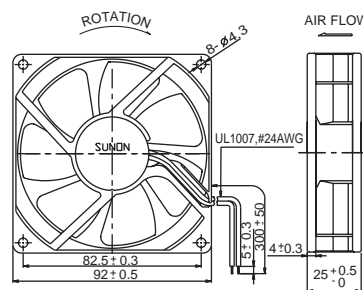
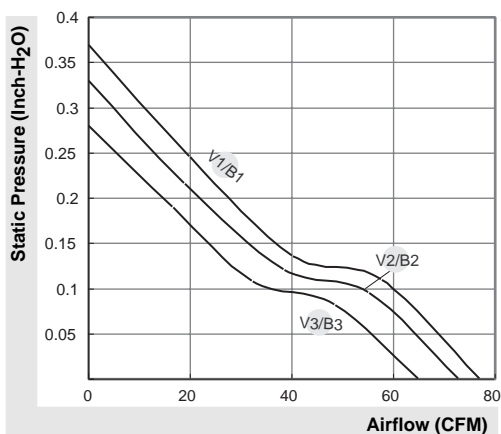


MagLev Power Motor Fan

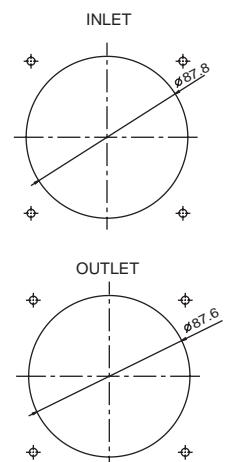
65~77 CFM



Model	P/N	Bearing ● VAPO ⊕ 2BALL	Rating Voltage (VDC)	Power Current (AMP)	Power Consumption (WATTS)	Speed (RPM)	Air Flow (CFM)	Static Pressure (Inch-H ₂ O)	Noise (dBA)	Weight (g)
PMD1209PTV1-A	GN	●	12	0.47	5.6	4200	77	0.37	47	120
PMD1209PTV2-A	GN	●	12	0.40	4.8	3900	73	0.33	44	120
PMD1209PTV3-A	GN	●	12	0.31	3.7	3600	65	0.28	42	120
PMD1209PTB1-A	(2).GN	⊕	12	0.46	5.5	4200	77	0.37	48	120
PMD1209PTB2-A	(2).GN	⊕	12	0.38	4.6	3900	73	0.33	45	120
PMD1209PTB3-A	(2).GN	⊕	12	0.30	3.6	3600	65	0.28	43	120
PMD2409PTV1-A	GN	●	24	0.25	6.0	4200	77	0.37	47	120
PMD2409PTV2-A	GN	●	24	0.20	4.8	3900	73	0.33	44	120
PMD2409PTV3-A	GN	●	24	0.16	3.8	3600	65	0.28	42	120
PMD2409PTB1-A	(2).GN	⊕	24	0.24	5.8	4200	77	0.37	48	120
PMD2409PTB2-A	(2).GN	⊕	24	0.19	4.6	3900	73	0.33	45	120
PMD2409PTB3-A	(2).GN	⊕	24	0.15	3.6	3600	65	0.28	43	120
PMD4809PTB1-A	(2).GN	⊕	48	0.14	6.7	4200	77	0.37	48	120



(Units : mm)



*All model could be customized on voltage or any other requirements to fit your need.

*Specifications subject to change without notice. Please Visit SUNON web site at <http://www.sunon.com> for update information.